



**ELECTRO BRAIN** CORP.

573 EAST 300 SOUTH STREET  
SALT LAKE CITY, UTAH 84102

Printed in Japan

Nintendo  
**GAME BOY**

# BONK'S REVENGE™



FIGHT!!



ELECTRO BRAIN

INSTRUCTION BOOKLET

DMG-RJ-USA-1

## **WARNING:**

PLEASE READ THE ENCLOSED  
CONSUMER INFORMATION AND  
PRECAUTIONS BOOKLET CAREFULLY  
BEFORE USING YOUR NINTENDO®  
HARDWARE SYSTEM OR GAME PAK.

LICENSED BY



NINTENDO, GAME BOY AND THE  
OFFICIAL SEALS ARE TRADEMARKS  
OF NINTENDO OF AMERICA INC.  
©1989 NINTENDO OF AMERICA, INC.

Hudson Soft® is a trademark of Hudson Soft Co., Ltd.  
Bonk's Revenge™ is a trademark of Hudson Soft Co., Ltd.  
© 1994 Hudson Soft Co., Ltd.  
© 1989-1994 RED.  
Published by Electro Brain Corp.® 1998 under license.  
All Rights Reserved.



THIS OFFICIAL SEAL IS YOUR ASSURANCE THAT  
NINTENDO HAS APPROVED THE QUALITY OF THIS  
PRODUCT. ALWAYS LOOK FOR THIS SEAL WHEN  
BUYING GAMES AND ACCESSORIES TO ENSURE  
COMPLETE COMPATIBILITY. ALL NINTENDO  
PRODUCTS ARE LICENSED BY SALE FOR USE ONLY  
WITH OTHER AUTHORIZED PRODUCTS BEARING THE  
OFFICIAL NINTENDO SEAL OF QUALITY.

# BONK'S™ REVENGE



## STORY

One day soon after arriving on the  
moon, Bonk hears an incredible  
explosion. Oh, no! The earth has  
split into two! The sinister King  
Drool has struck again.

This is bad. Real bad. Bonk must  
return to the Earth immediately!

## CONTENTS

### CONTROLS

2

### STARTING A GAME

4

### SPECIAL MOVES

6

### WHAT SHOULD I DO HERE?

8

### INTRODUCING THE NEW POWERUP SYSTEM!!

10

### ITEMS

12

### BONUS STAGES

13

### ROUNDS

14

# CONTROLS

## CONTROL PAD

Used to move Bonk.  
Bonk crouches when the  
Down is pressed.

## A Button

Allows Bonk to Jump.

## B Button

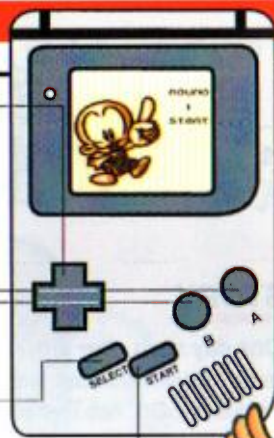
Allows Bonk to bonk  
(head butt).

## SELECT Button

Not used.

## START Button

Used to start and temporarily pause games.



Number of Smiley

Number of  
Crystal Heart

Number of Bonks

Power





# STARTING A GAME

## Starting a Game

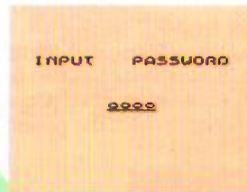
When the title screen appears, select either "START" or "PASSWORD" and then press the START Button.

Be sure to select START when playing a new game.



## Entering Passwords

A Password Entry Screen will appear if you select "PASSWORD". Move the cursor by pressing LEFT and RIGHT on the Control Pad, and select numerical digits using the A and B Buttons. Once you've entered a valid password, you can restart a saved game by pressing START.



## Description of the Game Over Screen

If you select "FINISHED" when the Game Over Screen appears, a 4-digit password will be displayed. If you note this password you can return to this game later even after turning off the power. If you select "CONTINUE", you will start again from the beginning of the last round you reached.



# SPECIAL MOVES

## SPIN BONK

A Button + Repeat B Button

This move allows Bonk to fly farther. Also, bonks performed during a jump have twice the power of normal bonks.



## CLIMBING

CONTROL PAD + Repeat A Button

This move lets Bonk cling to and climb vertical walls you can't jump over. Climb by repeatedly hitting the A Button!



## CLIMBING TREES

CONTROL PAD + A Button

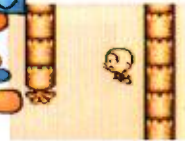
You can even climb trees using the basic climbing move. Change sides of the tree by pressing LEFT and RIGHT on the Control Pad!



## BONK JUMP

CONTROL PAD + B Button

This move lets Bonk climb between narrow vertical walls. With good timing you can quickly bonk your way all the way to the top!



## CLIMBING WATERFALLS

Up + Repeat A Button

You can even move left and right across the face of the waterfall you are climbing.



## CLINGING TO CEILINGS

CONTROL PAD + A Button

You can cling to a ceiling by pressing up on the Control Pad just when you touch a ceiling after jumping. Then you can move across the ceiling pressing LEFT and RIGHT on the Control Pad.



# WHAT SHOULD I DO HERE?

If you want to get to a place like that shown in the photo on the right, press the Down plus the A Button.



In places with low ceilings, you need to crawl. You can crawl by pressing down and left or down and right on the Control Pad.



When swallowed by enemies, try escaping by repeatedly hitting the A Button. You're going to take a lot of damage if you just stand there.





# INTRODUCING THE NEW POWERUP SYSTEM!!

## Description of Meat Roulette

The new powerup system is based on chance! When you get a meat, the three possible transformation modes will be displayed one after the other. Press the button and your body will transform into the mode selected.

## STEALTH BONK

Although you can't Ground Bonk, you can get into secret rooms in this mode. There are many secret rooms to try out.



Press Up on the Control Pad in front of the door.

## MASTER BONK

In Master Mode, Bonk's bonking and jumping power is increased. Bonking the ground (Ground Bonk) will cause all enemies on the screen to take damage.



## HUNGRY BONK

In Hungry Mode, you can bite enemies, which is even more powerful than bonking them. You can even Ground Bonk!



# ITEMS



## Smiley

One extra turn is awarded for collecting 100 smileys.



## Heart

Restores one level of power.



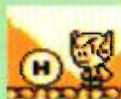
## Big Heart

Restores all power.



## Crystal Heart

Collecting four Crystal Hearts increases maximum power by one level.



## Invincibility

Makes Bonk temporarily invincible.



## 1UP

Awards one extra turn.

# BONUS STAGES

## Little Flowers

Whenever Bonk finds a Little Flower he will fly into the air and arrive at a bonus stage.

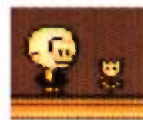
## Bonus Stages

Introducing Bonk's new rival! It's Mechabonk!

If you win two out of three fights against Mechabonk, you get one extra turn. If you lose you'll become a Wounded Bonk.

## Wounded Bonk

When you become a Wounded Bonk, you take twice as much damage as usual.



Drive Mechabonk out of the ring!





# ROUNDS

## Round 1

First try things out. Try each special move as you go along.



## Boss

His weakness is his head.  
Practice your timing so you can bonk him just as he charges you.



## Round 2

You float through space in Round 2. You can freely move in all directions using the Direction Key. You can use the A Button to rise quickly.



## Boss

His weakness is his body.  
Be careful!  
If you approach him recklessly you'll be swallowed by his three heads.



## Round 3

Since gravity is weak on this round, you can jump farther by pressing the A Button longer.



## Boss

His weakness is his head.  
Destroy him before he comes at you with his deadly spinning attack!

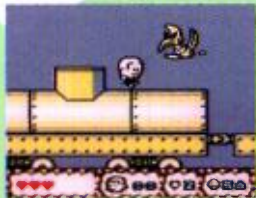


## and MORE ROUNDS



HEY! Your Neanderthal with an attitude is looking pale.  
Put some color back into the guy with SUPER GAME BOY.

Plug your BONK'S  
REVENGE into the  
SUPER GAME BOY to  
rampage through the  
stone ages with a little  
flair and color.



Correctly insert the Game Boy Game Pak into the Super Game Boy. Next, insert the Super Game Boy into the Super NES and move the power switch on the Super NES to the ON position. For further operation information, please consult your Super Game Boy and Super NES instruction manuals.

## ELECTRO BRAIN LIMITED WARRANTY

Electro Brain Corp. warrants to the original purchaser of this Electro Brain Corp. software product that the medium on which this computer program is recorded is free from defects in materials and workmanship for a period of ninety (90) days from the date of purchase. This Electro Brain Corp. software program is sold "as is," without express or implied warranty of any kind, and Electro Brain Corp. is not liable for any losses or damages of any kind resulting from use of this program.

Electro Brain Corp. agrees for a period of ninety (90) days to either repair or replace, at its option, free of charge, any Electro Brain Corp. software product, postage paid, with proof of date of purchase, at its Factory Service Center.

To receive this warranty:

1. DO NOT return your defective Game Pak to the retailer.
2. Notify the Electro Brain Corp. Factory Service Center at 573 East 300 South, Salt Lake City, Utah 84102 (801-531-1867). When you write to us, please provide us with your phone number and a brief explanation of what appears to be wrong.

This warranty is not applicable to normal wear and tear. This warranty shall not be applicable and shall be void if the defect in the Electro Brain Corp. software product has arisen through abuse, unreasonable use, mistreatment, or neglect. THIS WARRANTY IS IN LIEU OF ALL OTHER WARRANTIES AND NO OTHER REPRESENTATIONS OR CLAIMS OF ANY NATURE SHALL BE BINDING ON OR OBLIGATE ELECTRO BRAIN CORP. ANY IMPLIED WARRANTIES APPLICABLE TO THIS SOFTWARE PRODUCT, INCLUDING WARRANTIES OF MERCHANTABILITY AND FITNESS FOR A PARTICULAR PURPOSE, ARE LIMITED TO THE NINETY (90) DAY PERIOD DESCRIBED ABOVE. IN NO EVENT WILL ELECTRO BRAIN CORP. BE LIABLE FOR ANY SPECIAL INCIDENTAL, OR CONSEQUENTIAL DAMAGES RESULTING FROM POSSESSION, USE OR MALFUNCTION OF THIS ELECTRO BRAIN CORP. SOFTWARE PRODUCT.

Some states do not allow limitations as to how long an implied warranty lasts and/or exclusions or limitations of incidental or consequential damages so the above limitations and/or exclusions of liability may not apply to you. This warranty gives you specific rights, and you may also have other rights which vary from state to state.