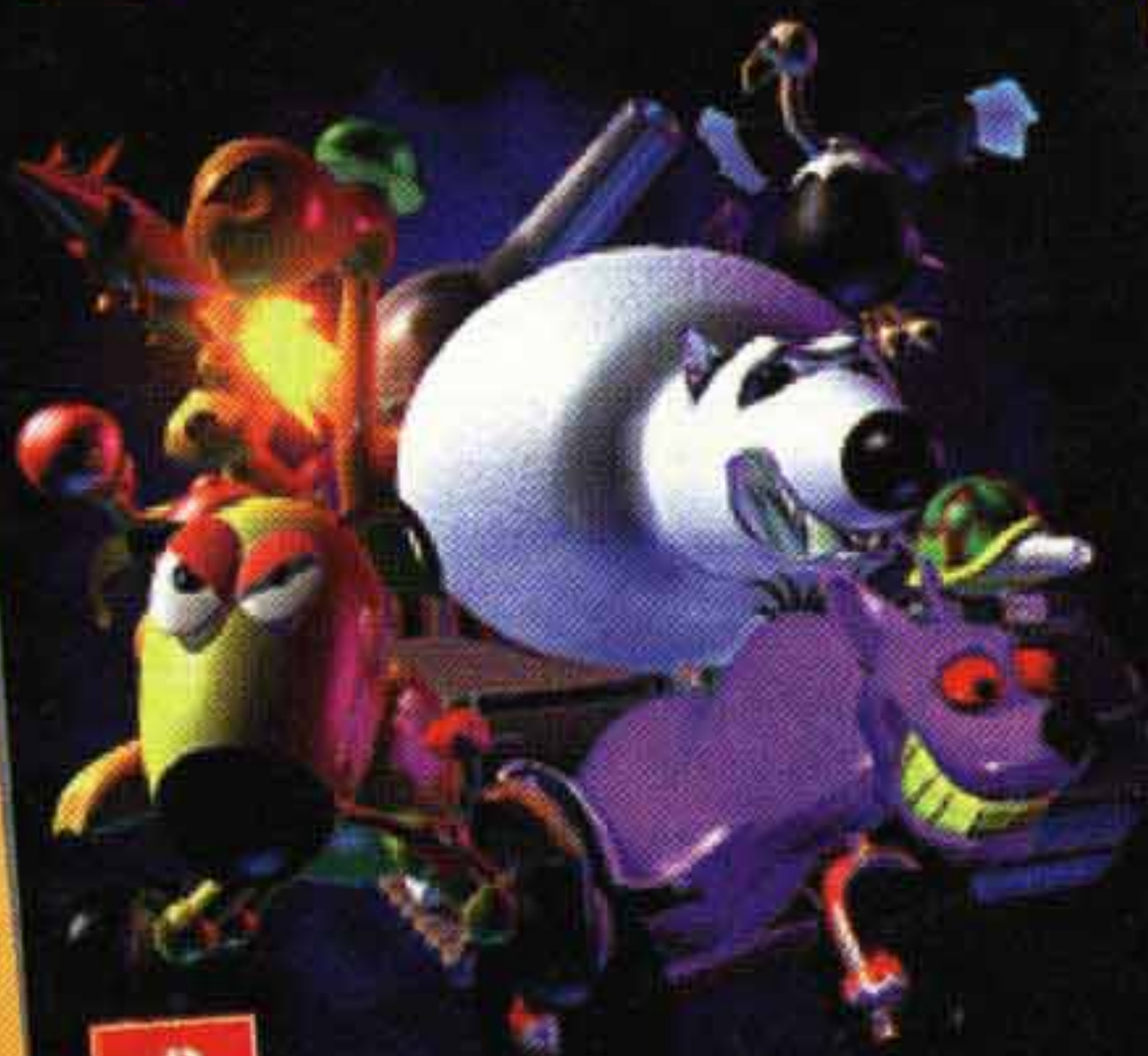


**YOU'VE GOT THE GAME
NOW GET THE GUIDE**

PRIMA'S OFFICIAL STRATEGY GUIDE

SPACE STATION SILICON VALLEY



Prima Publishing
Available wherever games are sold
www.primagames.com

Take 2 Interactive
4-6 Place de la Bourse
75002 Paris
France

Take 2 Interactive Software Europe
Hogarth House
29-31 Sheet Street
Windsor, Berkshire SL4 1BY
United Kingdom

Take 2 Interactive
Kastenbauerstraße 2
81677 München
Deutschland

TAKE 2
INTERACTIVE SOFTWARE
www.take2games.com

NUS-NSVP-EUR

INSTRUCTION BOOKLET

SPACE STATION SILICON VALLEY



SOLD BY

TAKE 2
INTERACTIVE SOFTWARE





NINTENDO®, NINTENDO 64, AND ARE TRADEMARKS OF NINTENDO CO., LTD.



THIS SEAL IS YOUR ASSURANCE THAT NINTENDO HAS APPROVED THE QUALITY OF THIS PRODUCT. ALWAYS LOOK FOR THIS SEAL WHEN BUYING GAMES AND ACCESSORIES TO ENSURE COMPLETE COMPATIBILITY WITH YOUR NINTENDO PRODUCT.

CE SCEAU EST VOTRE ASSURANCE QUE NINTENDO A APPROUVÉ CE PRODUIT ET QU'IL EST CONFORME AUX NORMES D'EXCELLENCE EN MATIÈRE DE FABRICATION, DE FIABILITÉ ET SURTOUT, DE QUALITÉ. RECHERCHEZ CE SCEAU LORSQUE VOUS ACHETEZ DES JEUX ET DES ACCESSOIRES POUR ASSURER UNE TOTALE COMPATIBILITÉ AVEC VOTRE PRODUIT NINTENDO.

DIESES QUALITÄTSSIEGEL IST DIE GARANTIE DAFÜR, DASS SIE NINTENDO-QUALITÄT GEKAUFT HABEN. ACHTEN SIE DESHALB IMMER AUF DIESES SIEGEL, WENN SIE SPIELE ODER ZUBEHÖR KAUFEN, UM SICHER ZU SEIN, DASS ALLES EINWANDFREI ZU IHREM NINTENDO-PRODUKT PASST.

QUESTO SIGILLO È LA SUA GARANZIA CHE NINTENDO HA VALUTATO ED APPROVATO QUESTO PRODOTTO. RICHIEDALO SEMPRE, ALL'ACQUISTO DI GIOCHI ED ACCESSORI PER ASSICURARE LA COMPLETA COMPATIBILITÀ CON IL SUO PRODOTTO NINTENDO.

ESTE SELLO ES SU SEGURO DE QUE NINTENDO HA APROBADO LA CALIDAD DE ESTE PRODUCTO. BUSQUE SIEMPRE ESTE SELLO CUANDO COMPRA VIDEOJUEGOS Y ACCESORIOS PARA ASEGURARLE UNA COMPLETA COMPATIBILIDAD CON SU PRODUCTO NINTENDO.

DIT ZEGEL WAARBORGT U, DAT NINTENDO DE KWALITEIT VAN DIT PRODUKT HEEFT GOEDGEKEURD. LET BIJ HET KOPE VAN SPELEN EN ACCESSOIRES ALTIJD OP DIT ZEGEL. ZODAT U VERZEKERD BENT VAN DE VOLLEDIGE VERENIGBAARHEID MET UW NINTENDO PRODUKT.

DENNA ETIKETT GARANTERAR ATT NINTENDO STÅR FÖR PRODUKTENS KVALITET. KONTROLLERA ATT ETIKETTEN FINNS PÅ SPEL OCH TILLBEHÖR DU KÖPER FÖR ATT FÖRSÄKRA DIG OM ATT DE ÄR KOMPATIBILA MED NINTENDO PRODUKTER.

DETTE SEGL GARANTERER, AT NINTENDO HAR GODKENDT KVALITETEN AF DETTE PRODUKT. SE ALTID EFTER DETTE SEGL, NÅR DU KØBER SPIL OG TILBEHØR, SÅ DU ER SIKKER PÅ FULD KOMPATIBILITET MED DIT NINTENDO PRODUKT.

TÄMÄ TARRA VAKUUTTAA, ETTÄ NINTENDO ON HYVÄKSYNYT TÄMÄN TUOTTEEN LAADUN. TARKISTA AINA TÄMÄ TARRA ENNEN KUIN OSTAT PELEJÄ JA MUITA TARVIKKEITA, JOTTA SAAT VARMISTI NINTENDO YHTEENSOPIVIA TUOTTEITA.

WARNING : PLEASE CAREFULLY READ THE CONSUMER INFORMATION AND PRECAUTIONS BOOKLET INCLUDED WITH THIS PRODUCT BEFORE USING YOUR NINTENDO HARDWARE SYSTEM, GAME PAK OR ACCESSORY.

ATTENTION : VEUILLEZ LIRE ATTENTIVEMENT LA NOTICE "INFORMATIONS ET PRECAUTIONS D'EMPLOI" QUI ACCOMPAGNE LA CONSOLE NINTENDO, LA CARTOUCHE DE JEU OU LES ACCESSOIRES AVANT DE LES UTILISER.

HINWEIS : BITTE LIES DIE VERSCHIEDENEN BEDIENUNGSANLEITUNGEN, DIE SOWOHL DER NINTENDO HARDWARE, WIE AUCH JEDER SPIELCASSETTE BEIGELEGTE SIND, SEHR SORGFÄLTIG DURCH!

ATTENZIONE : LEGGI ATTENTAMENTE LE INFORMAZIONI PER L'UTENTE E LE PRECAUZIONI INCLUSE NELLA CONFEZIONE PRIMA DI USARE IL TUO SUPER NINTENDO ENTERTAINMENT SYSTEM™ LE CASSETTE O GLI ACCESSORI NINTENDO.

ADVERTENCIA : POR FAVOR, LEE ATENTAMENTE LA INFORMACION AL CONSUMIDOR Y EL FOLLETO DE INSTRUCCIONES QUE ADJUNTAMOS CON ESTE PRODUCTO ANTES DE UTILIZAR TU CONSOLA, VIDEOJUEGO O ACCESORIO NINTENDO.

WAARSCHUWING : LEES EERST ZORGVULDIG DE BROCHURE MET CONSUMENTENINFORMATIE EN WAARSCHUWINGEN DOOR DIE BIJ DIT PRODUKT IS MEEVERPAKT VOORDAT HET NINTENDO-SYSTEEM, DE SPELCASSETTE OF HET ACCESSOIRE IN GEBRUIK WORDT GENOMEN.

OBS : LÄS NOGGRANT IGENOM KONSUMENTUPPLYSNINGARNA OCH FÖRSIKTIGHETSÅTGÄRDERNA I BRUKSANVISNINGARNA SOM MEDFÖLJER PRODUKTEN INNAN DU ANVÄNDER DEN MED ETT NINTENDO SYSTEM, SPELPAKETET ELLER TILLBEHÖR.

ADVARSEL : LÆS FORBRUGERINFORMATIONEN OG HÆFTET MED SIKKERHEDSREGLER, DER FØLGER, MED DETTE PRODUKT, FØR DU BEGYNDER AT BRUGE NINTENDO HARDWARE SYSTEM, GAME PAK ELLER TILLBEHØRET.

VAROITUS : LUE HUOLELLISESTI LAITTEEN VARUSTEISIIN KUULUVAT KULUTTAJATIEDOT JA HUOMAUTUKSET ENNEN NINTENDO-LAITTEEN, PELIN (GAME PAK) TAI MUUN VAURSTEEN KÄYTTÖÄ.

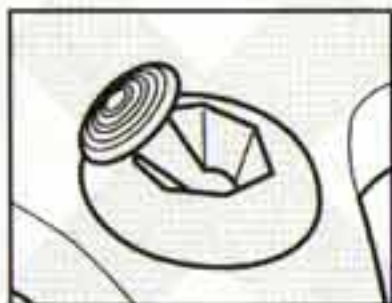
C O N T E N T S

- 3 Introduction
- 4 Default Controls
- 5 Getting Started
- 6 Game Overview
- 10 Pause Options
- 10 Saving Games

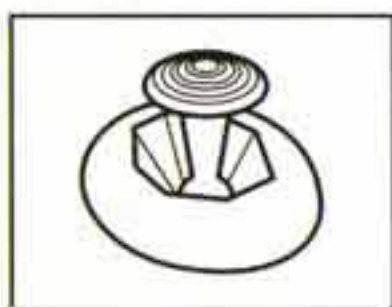
CONTROL STICK FUNCTION

The Nintendo 64 Controller contains a Control Stick which uses an analog system to read the angles and direction of its movement. This allows subtle control that is not possible using the conventional + Control Pad.

When turning the Control Deck power ON, do not move the Control Stick from it's neutral position on the controller.



If the Control Stick is held at an angled position (as shown in the picture on the left) when the power is turned ON, this position will be set as neutral. This will cause games using the Control Stick to operate incorrectly.



To reset the neutral position once the game has started, let go of the Control Stick so it can return to its center position (as shown in the picture on the left) then press START while holding the L and R Buttons.

The Control Stick is a precision instrument, make sure not to spill liquids or place any foreign objects into it.

LOADING

1. Make sure the power is OFF on your Nintendo® 64 Control Deck.
2. Insert your SPACE STATION: SILICON VALLEY™ Nintendo 64 Game Pak into the Control Deck as described in the instruction manual.
3. Insert Controller into Socket 1.
4. Slide the power switch to ON (Important: make sure not to touch the Control Stick when doing so).

This game is compatible with the Rumble Pak accessory. Before using it please read the Rumble Pak instruction booklet carefully. Follow on-screen instructions to determine when you should insert or remove the Rumble Pak.

Introduction

WELCOME TO SPACE STATION: SILICON VALLEY™!

Launched in 2001, Silicon Valley was the largest, most expensive space station ever created. An experiment in artificial life and robotic evolution. Silicon Valley broke new ground in terms of size, luxury and extreme danger....

There was only one slight hiccup. Seven minutes after the station was launched, it vanished. Completely. Utterly. Absolutely. Gone.

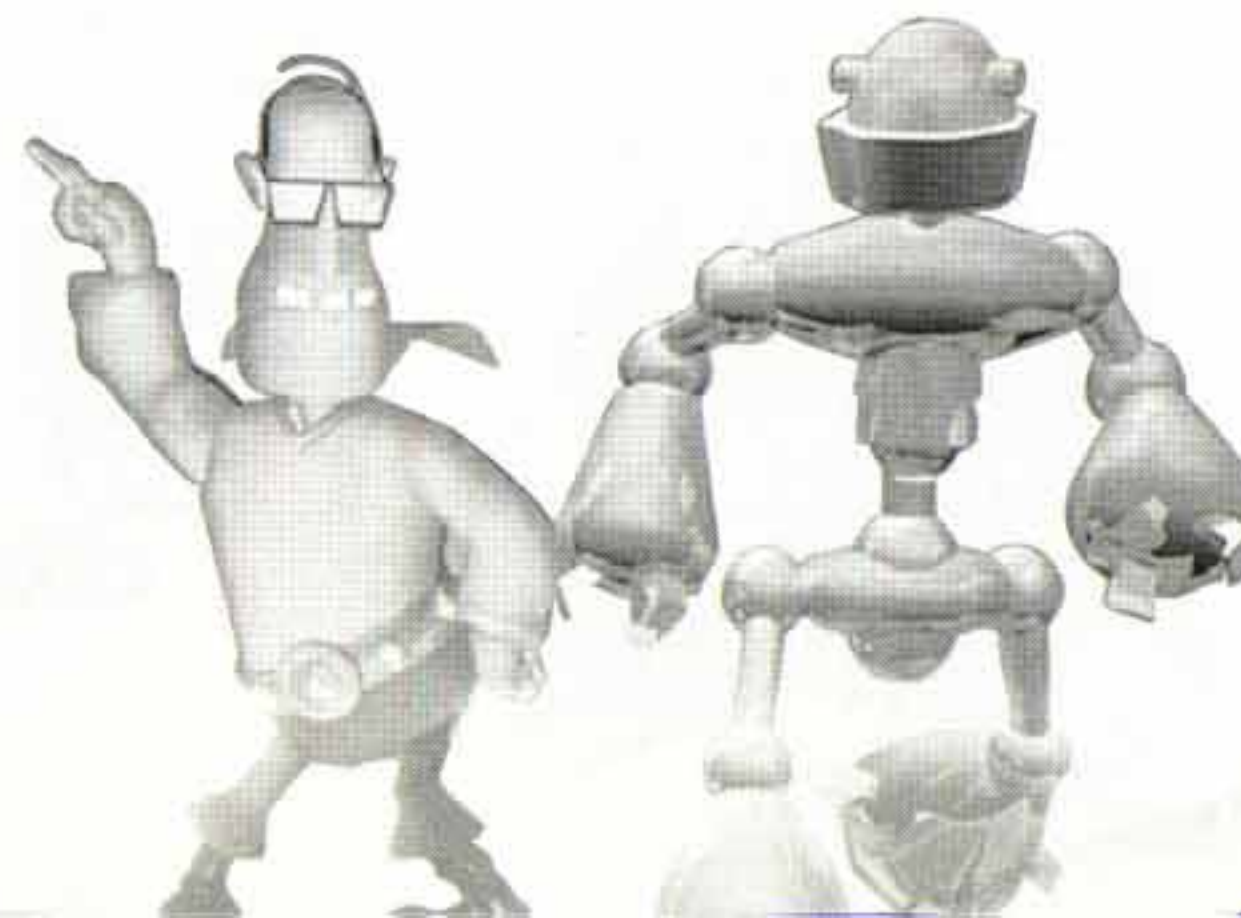
Of course, a massive search was launched. Every terrorist group in the solar system who had 1) a motive and 2) a REALLY big garage was immediately arrested, searched and locked up on general suspicion. But nothing was ever found.

Until now. After 1000 years, Silicon Valley has returned. It was spotted by a giant orbiting telescope as it passed the orbit of Uranus. The Earth's government immediately sprang into action and sent aboard a squadron of brave Space Marines, each and every one of them barrel-chested, sharp-shooting, iron-pumping heroes. They vanished. The next squad vanished too. In fact about 5 squads were sent to the giant derelict station before someone figured out that they weren't getting anywhere.

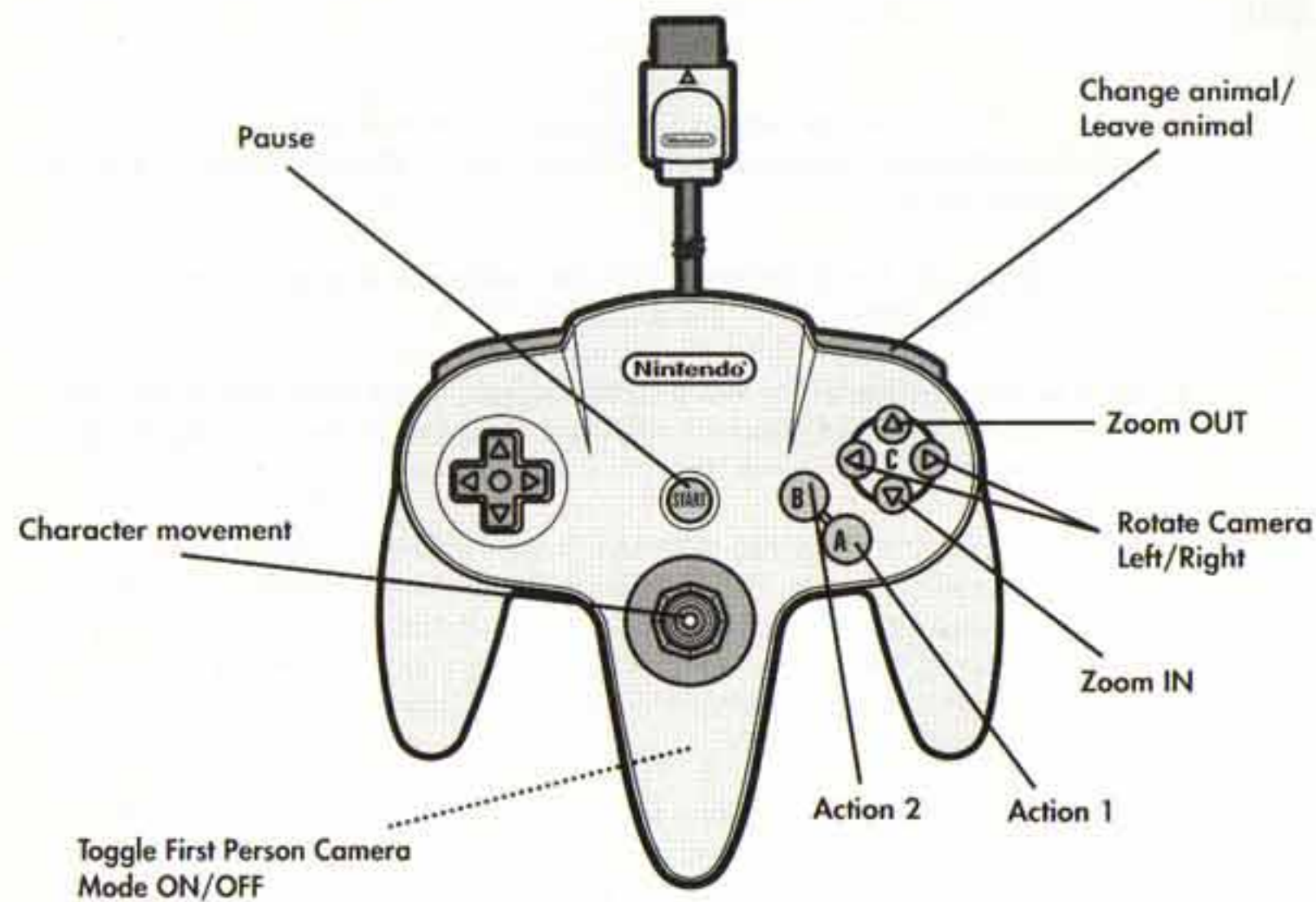
What this job needed was someone expendable and cheap. Enter DAN DANGER and EVO, the bravest heroes that Earth has to offer (and at knockdown prices too....). Dan is, of course, human, but EVO is the end result of the Silicon Valley experiments, a super-intelligent, self-evolving robot.

The fate of the Earth is in their hands. Who knows what terrible changes have occurred over the last millennium? Who, or what, is in charge of the station? Why has it suddenly reappeared? Why is it heading straight for Earth? What can be done to stop it? Can Dan stop it? Evo? You?

SPACE STATION: SILICON VALLEY™ - It's a Silly Place!

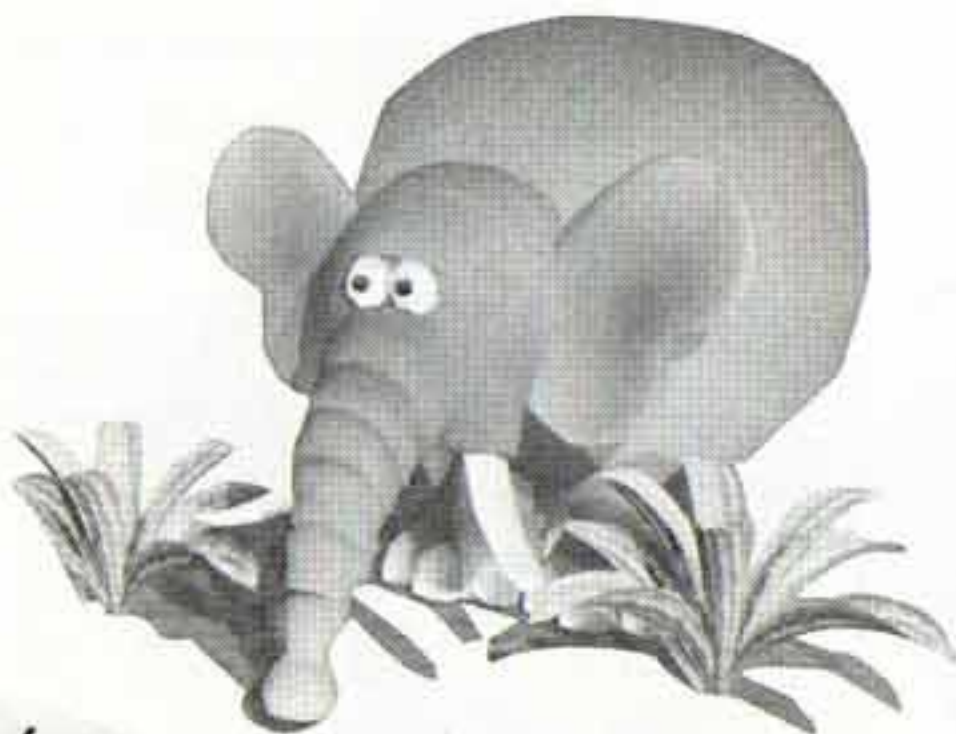


Default Controls



MENU CONTROLS

Start Button: Pause game/pause options
 Control Stick: Navigate through menu options
 A Button: Select option



Getting Started

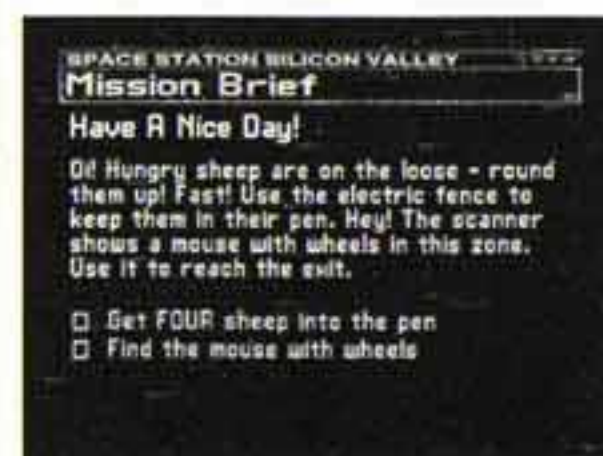
At the title screen, press the START BUTTON to access the Main Menu.



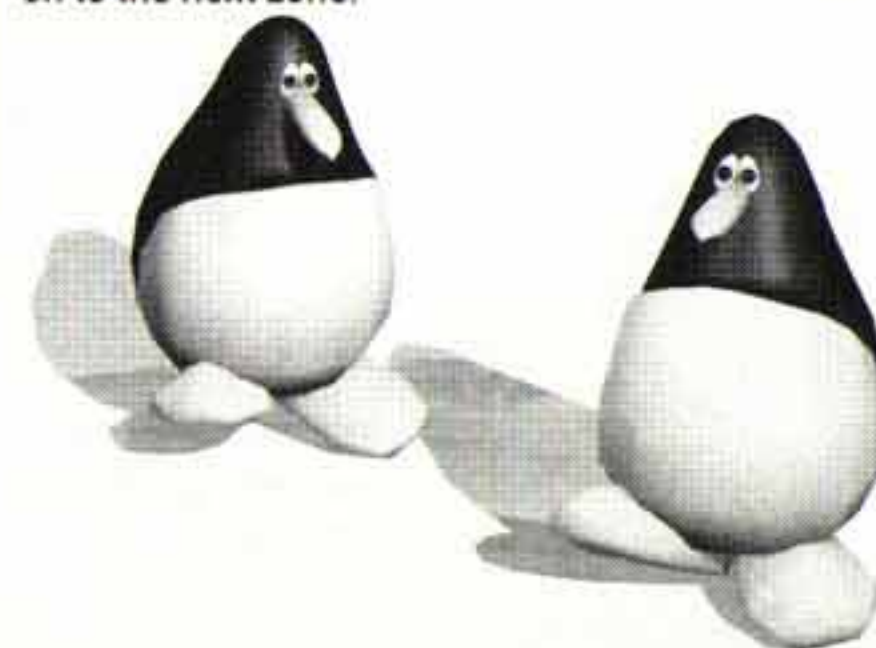
SELECTING A SAVE SLOT (Bank Select)
 Press A Button to select a save slot. Your progress in the game will be saved to this location. It is possible to save up to four games.



ZONE SELECT
 Press A Button to select a zone and display the mission briefing.



MISSION BRIEF
 Every zone displays a brief message from Dan, telling you what to expect and stating your goals in the zone. You have to complete these goals before you can move on to the next zone.



Game Overview

SPACE STATION: SILICON VALLEY™ is divided into four unique environments.



Euro Eden - A pastoral wonderland.

Arctic Kingdom - Brr Chilly! Bring a big jacket.

Jungle Safari - A taste of the wild frontier.

Desert Adventure - Savor the sunny side of artificial life.

Each world is full to bursting with it's own unique menagerie of lovable animal playmates. The animals behave just like their earthbound counterparts. They can love, hate, fear and eat each other. Just watch it. That's all we're saying.

Since Dan crashed into a Euro Eden, the player will have to complete three Euro Eden zones before the Arctic Kingdom becomes available. After three Arctic zones have been completed, the player can move onto Jungle Safari and, once three zones of the Jungle Safari are completed, the player can move between all of the zones in the game.

Only after completing all of the available zones will the player be able to explore the depths of the SPACE STATION: SILICON VALLEY™ control room...

Warning!

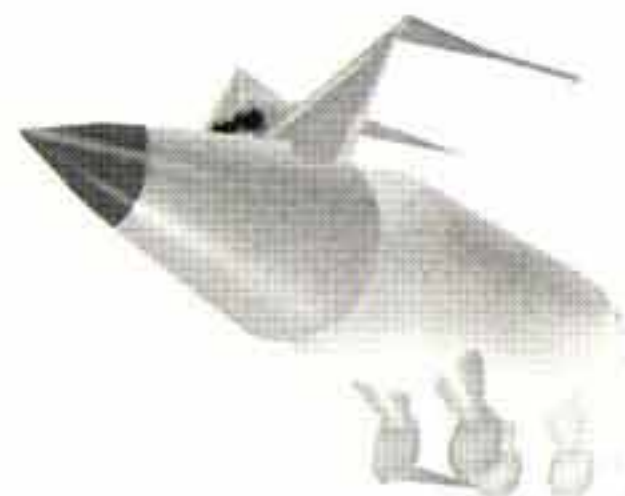
SPACE STATION: SILICON VALLEY™ is populated by a large number of robotic animals. These animals have evolved to survive in a ferocious, untamed environment. They have never encountered man before. Be afraid. Be very, very afraid. And scared too.

SPACE STATION: SILICON VALLEY™ is Darwinism taken to dangerous extremes. Each animal has skills and abilities that no other animal will possess. If you want to survive up here baby, you better use them all...



ON SCREEN

The large green bar shows your remaining energy. When your energy bar turns red, start to worry. If your energy vanishes, you're dead.

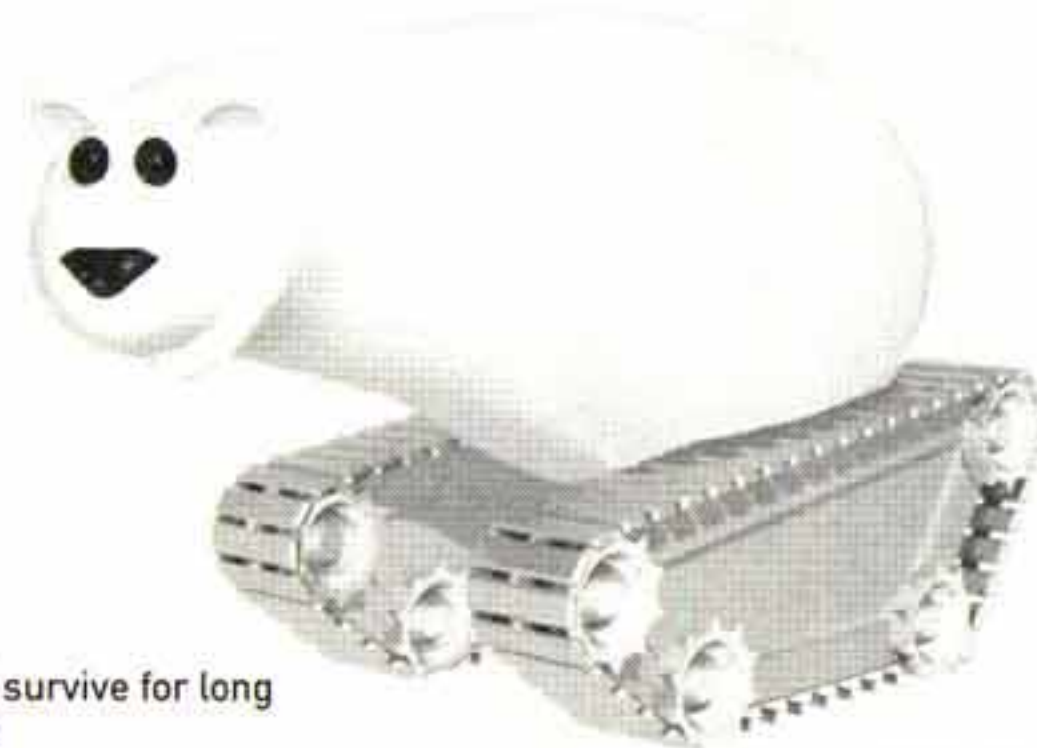


The special skills available to your animal host are sometimes limited.

The blue bar shows the remaining energy of your opponent.

The blue button shows the amount of power available to your animal's first ability (if applicable).

The green button shows the amount of power available to your animal's second ability (if applicable).



POSSESSION

WARNING! EVO cannot survive for long outside an animal host.

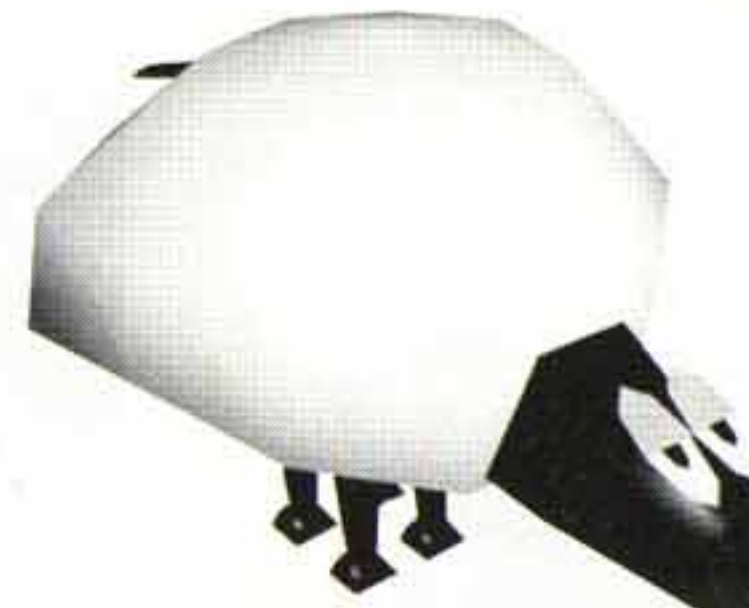
USEFUL THINGS

Power Cells

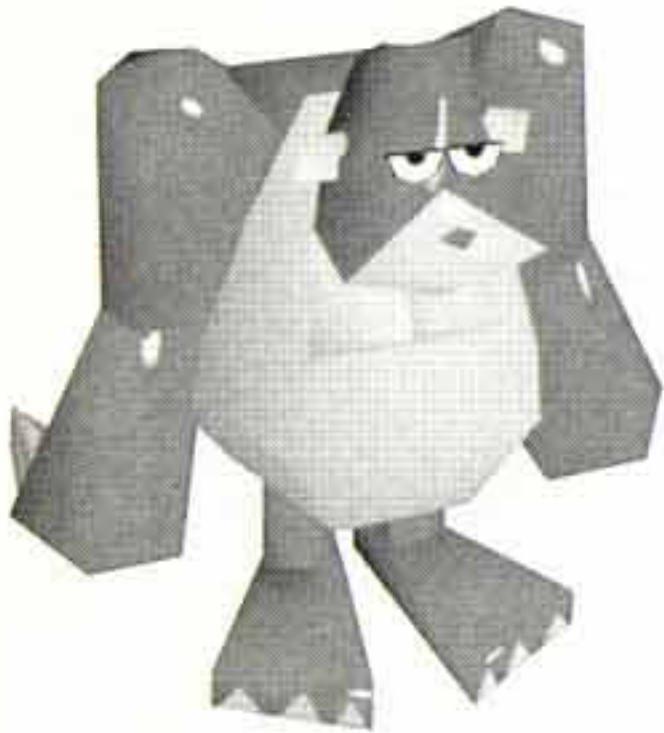
In order to repair EVO's body, you must collect as many Power Cells as possible.



Energy



If you're feeling a little under the weather. Look for these fellows to perk you up.



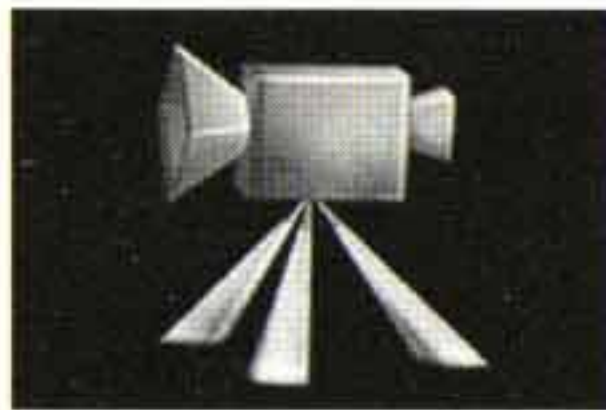
Teleporter



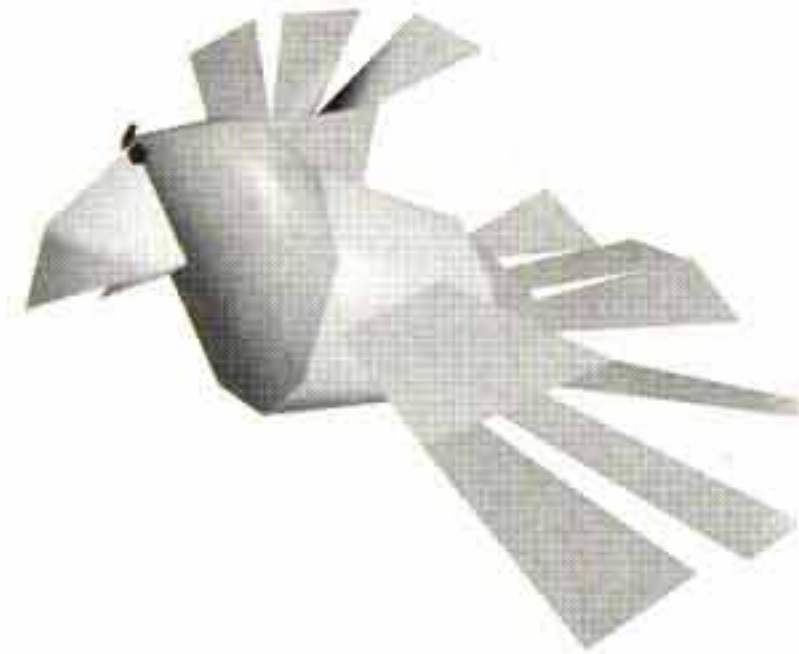
Every zone has an Entry teleporter and an Exit teleporter. The Exit teleporter will only be activated once you have completed all of the goals from your mission briefing.

Things To Look Out For

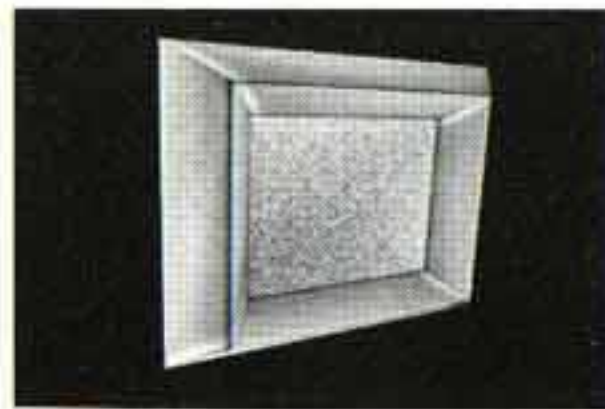
Cameras



Many zones in Silicon Valley have Level Overviews. Touch the camera for a quick whirlwind tour of the drama and excitement that lies in store for you.



Terminals

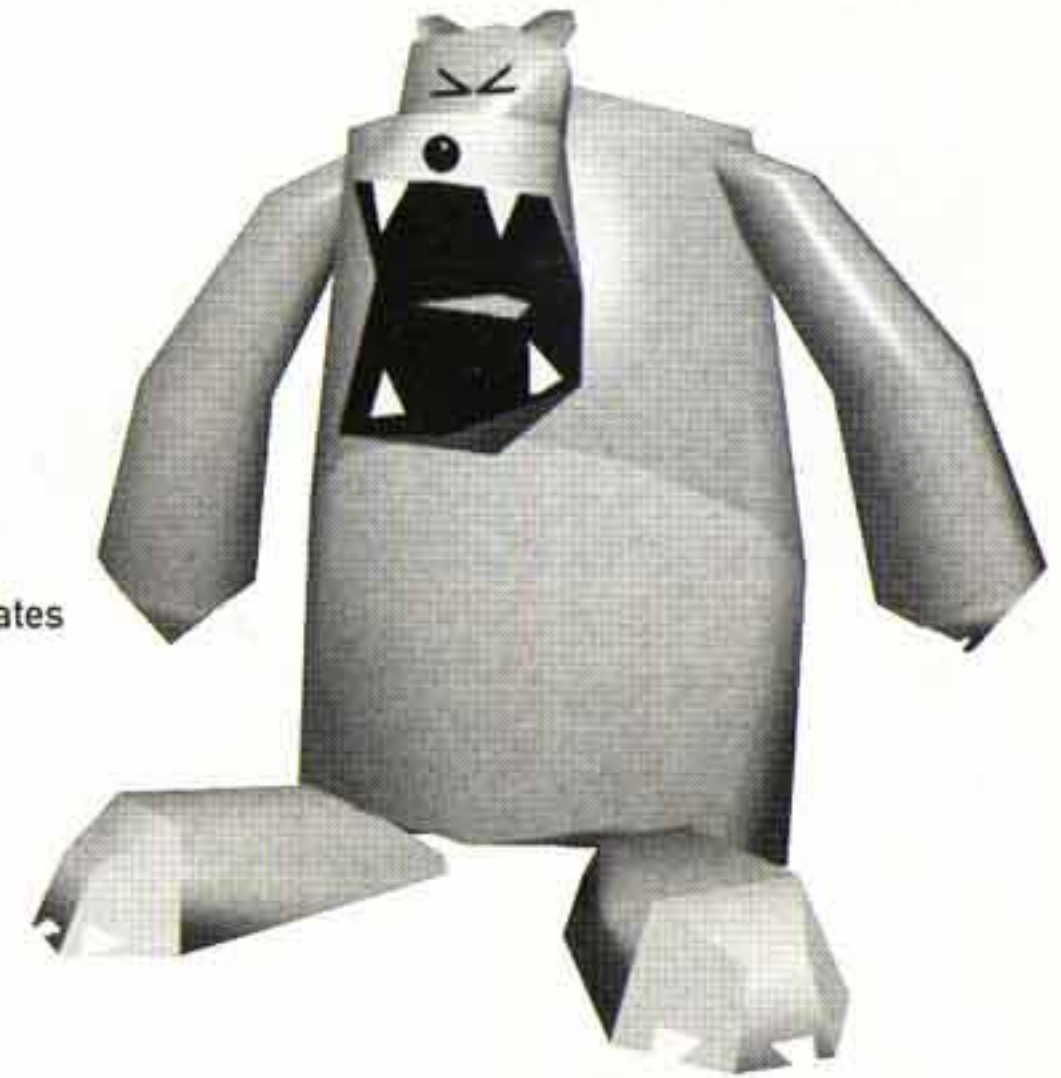


Every zone has a terminal. Touching the terminal will download the information about EVO's current animal host from the Silicon Valley databanks.

Crates



It's like Christmas morning. Attack crates to reveal some lovely energy.



Souvenirs

Since you're only going to get paid upon **SUCCESSFUL** completion of your mission, you better keep an eye open for anything that looks expensive. Every zone will have some sort of souvenir.



Boarding Party

The original boarding party was, as we mentioned, lost without trace. But keep your eyes peeled for useful remains.



Pause Options



Continue

Mission Brief

Replay Zone

Exit Zone

Music

SFX

Language

Leave SV

Continue playing the zone

Display the mission briefing information

Restart from the beginning of the zone

Leave zone and return to zone select screen

Adjust the volume of the music

Adjust the volume of the sound effects

Choose the language used in the game

Exit zone and return to the title screen

Power Cells

Shows the number of Power Cells picked up in the current zone

Saving Games

Saving Games

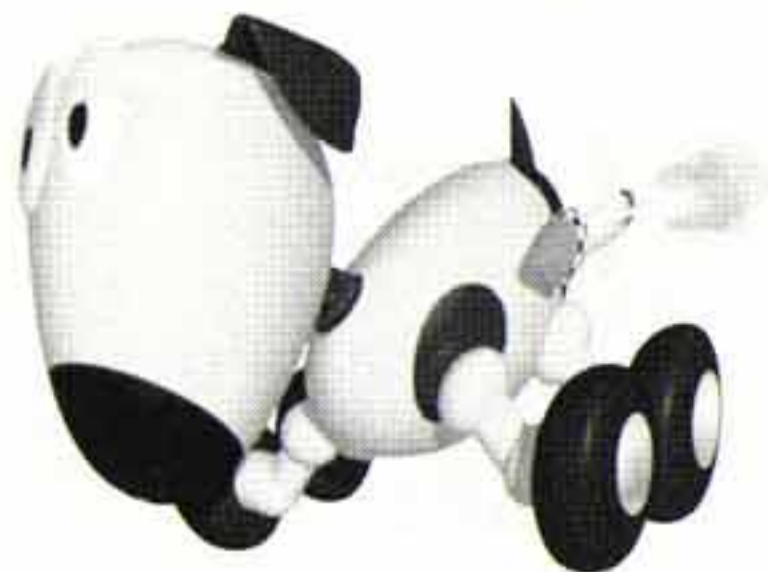
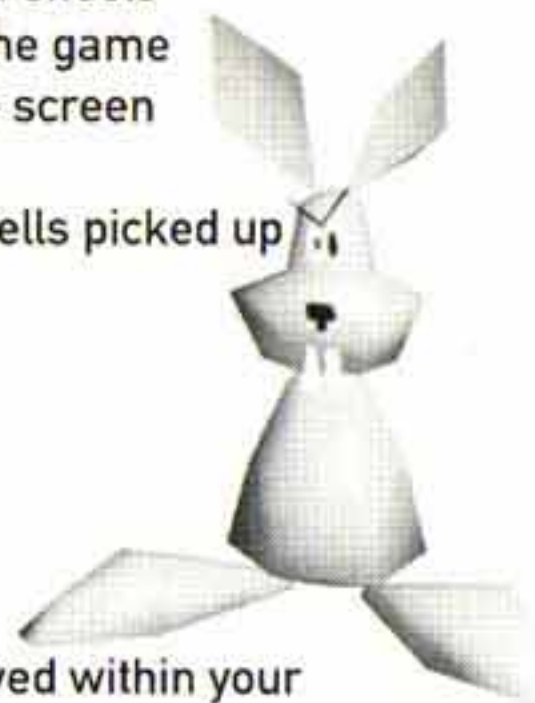
Every time you complete a zone it is automatically saved within your chosen save slot.

Copy Save Slot

Selecting this option will allow you to copy a game in progress into another save slot. Pick the saved game you wish to copy, then select the saved slot you wish to copy it into. You will be asked to confirm your choice before the game is copied.

Delete Save Slot

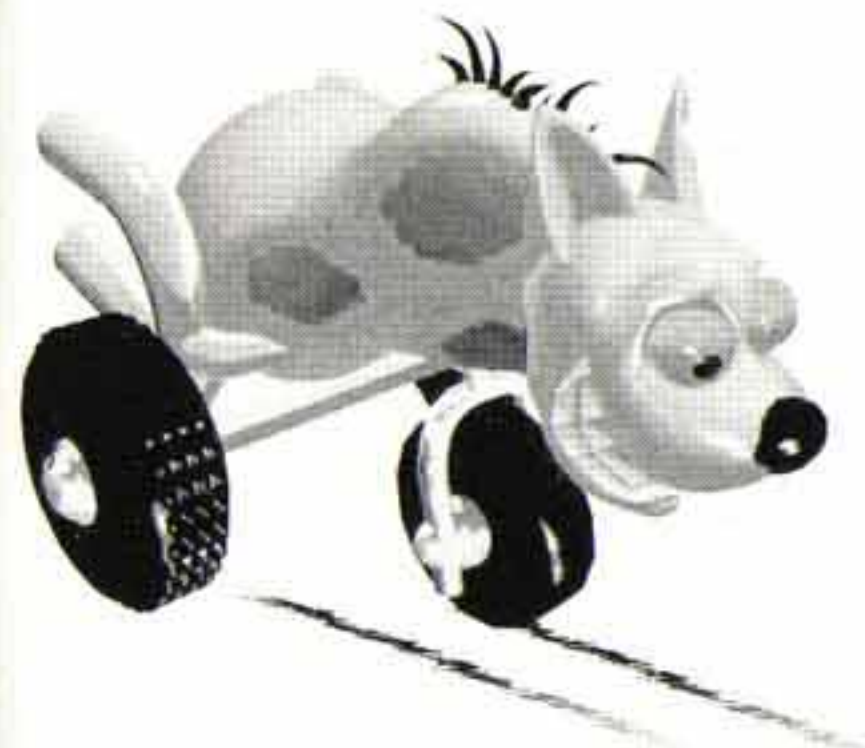
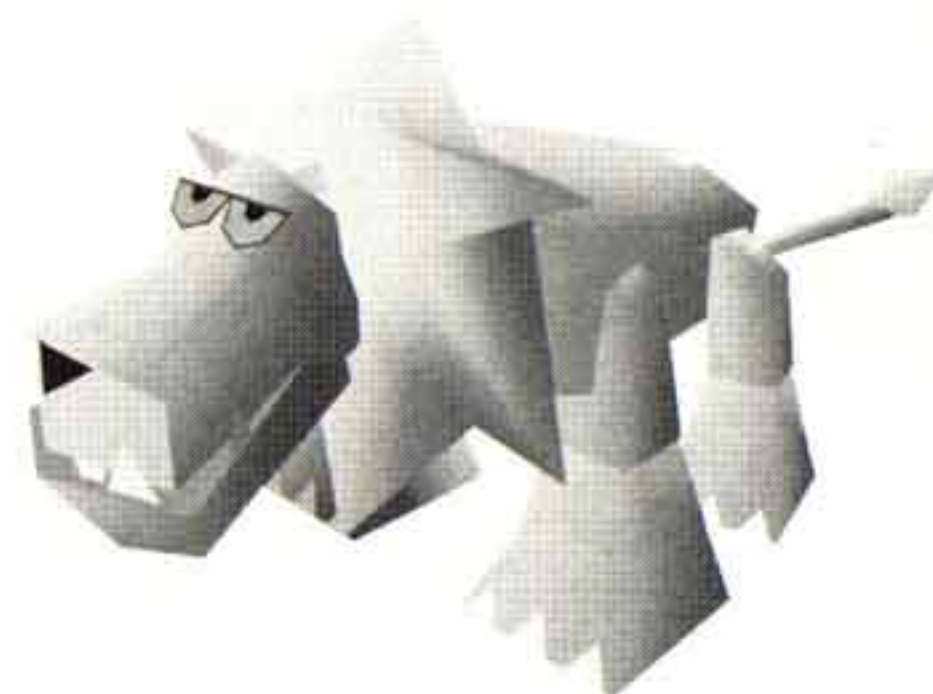
Selecting this option will remove a game in progress, making room for a new game. Use the Control Stick to highlight the save slot you wish to delete and press A Button to select. You will be asked to confirm your selection.



Loading a Saved game.



Once you have completed a zone, it can be replayed at any time. To replay a previously completed zone, select any of the highlighted zones displayed in your save slot.



Credits

DMA Design

DMA Development Manager
Jim Woods

Lead Programmer
Leslie Benzies

Programmers
Daniel Leyden
Gordon Speirs
Obbe Vermeij

Editor Programmers
Barnaby Dellar
Adam Fowler

Lead Artist
Jamie Bryan

Artists
Aaron Garbut
Andrew Strachan

Additional Artwork
Robert Jeffrey
Craig Moore

Level Design
Craig Filshie
William Mills

Sound Designer
Allan Walker

Sample Trimmer
Bert Reid

Music
Stuart Ross

Additional Audio Programmer
Raymond Usher

DMA QA Department
Alan Jack

Manual Text
Brian Baglow

Technical Support
Mark Ettle
Julian Glendinning
Kevin Kelly

Take 2 Interactive

Executive Producer
Sam Houser

Technical Producer
Gary J. Foreman

Associate Producer
Ken Jordan

Product Manager
Matt Gorman (Europe)
Rick Mehler (North America)

Manual Layout
Elaine Yip

QA Supervisor
Claire Cuthill

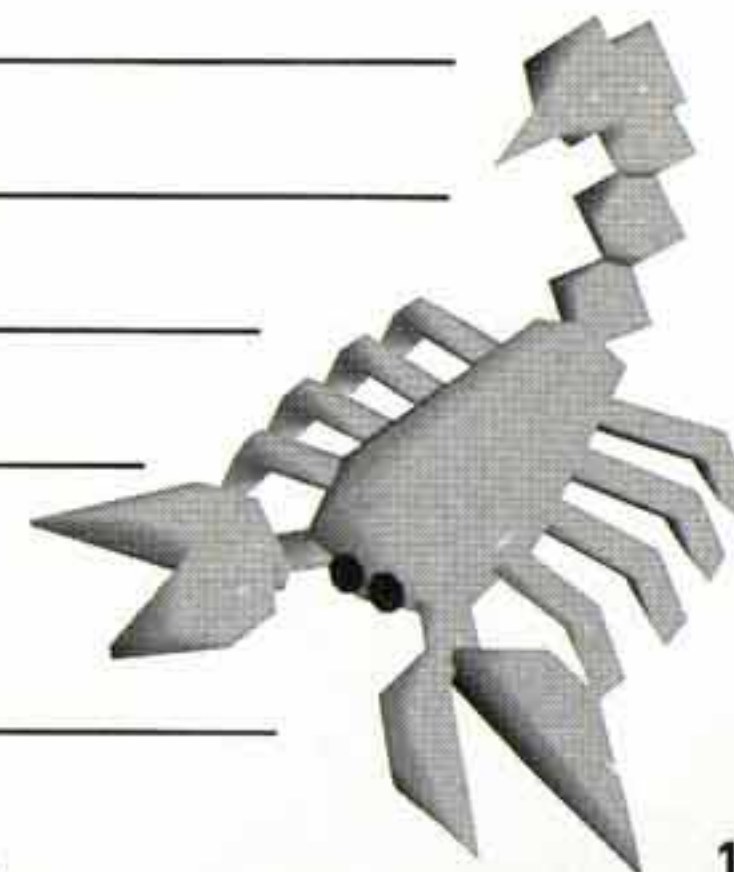
Take 2 QA Department
Adam Rabin (Lead)
Nick Sneddon
Charles Johnson
Gary Sims
Lee Brown
Julian Hoddy
Ronnie Jackson
Michael Wenn
Chris Lacey
Nik Huggins
Greg Mathews
Edward Hayden

Special Thanks
 Jamie King
 Lucien King
 Dan Houser
 Ian Thomson
 Jennifer Kolbe
 Kevin Brannan
 Gavin White
 Gary Penn



NOTES

For game strategies and hints in the United Kingdom call:
0891 30 33 44
Calls are charged at 50p per min at all times, ask bill payers permission.



NOTES

