

NTR-ALKE-USA

NINTENDO DS™

# LUNAR KNIGHTS™

INSTRUCTION BOOKLET

KONAMI

**PLEASE CAREFULLY READ THE SEPARATE HEALTH AND SAFETY PRECAUTIONS BOOKLET INCLUDED WITH THIS PRODUCT BEFORE USING YOUR NINTENDO® HARDWARE SYSTEM, GAME CARD OR ACCESSORY. THIS BOOKLET CONTAINS IMPORTANT HEALTH AND SAFETY INFORMATION.**

**IMPORTANT SAFETY INFORMATION: READ THE FOLLOWING WARNINGS BEFORE YOU OR YOUR CHILD PLAY VIDEO GAMES.**

### **WARNING - Seizures**

- Some people (about 1 in 4000) may have seizures or blackouts triggered by light flashes or patterns, such as while watching TV or playing video games, even if they have never had a seizure before.
- Anyone who has had a seizure, loss of awareness, or other symptom linked to an epileptic condition should consult a doctor before playing a video game.
- Parents should watch when their children play video games. Stop playing and consult a doctor if you or your child have any of the following symptoms:

**Convulsions**  
**Altered vision**

**Eye or muscle twitching**  
**Involuntary movements**

**Loss of awareness**  
**Disorientation**

- To reduce the likelihood of a seizure when playing video games:
  1. Sit or stand as far from the screen as possible.
  2. Play video games on the smallest available television screen.
  3. Do not play if you are tired or need sleep.
  4. Play in a well-lit room.
  5. Take a 10 to 15 minute break every hour.

### **WARNING - Radio Frequency Interference**

The Nintendo DS can emit radio waves that can affect the operation of nearby electronics, including cardiac pacemakers.

- Do not operate the Nintendo DS within 9 inches of a pacemaker while using the wireless feature.
- If you have a pacemaker or other implanted medical device, do not use the wireless feature of the Nintendo DS without first consulting your doctor or the manufacturer of your medical device.
- Observe and follow all regulations and rules regarding use of wireless devices in locations such as hospitals, airports, and on board aircraft. Operation in those locations may interfere with or cause malfunctions of equipment, with resulting injuries to persons or damage to property.

### **WARNING - Repetitive Motion Injuries and Eyestrain**

Playing video games can make your muscles, joints, skin or eyes hurt after a few hours. Follow these instructions to avoid problems such as tendinitis, carpal tunnel syndrome, skin irritation or eyestrain:

- Avoid excessive play. It is recommended that parents monitor their children for appropriate play.
- Take a 10 to 15 minute break every hour, even if you don't think you need it.
- When using the stylus, you do not need to grip it tightly or press it hard against the screen. Doing so may cause fatigue or discomfort.
- If your hands, wrists, arms or eyes become tired or sore while playing, stop and rest them for several hours before playing again.
- If you continue to have sore hands, wrists, arms or eyes during or after play, stop playing and see a doctor.

### **WARNING - Battery Leakage**

The Nintendo DS contains a rechargeable lithium ion battery pack. Leakage of ingredients contained within the battery pack, or the combustion products of the ingredients, can cause personal injury as well as damage to your Nintendo DS.

If battery leakage occurs, avoid contact with skin. If contact occurs, immediately wash thoroughly with soap and water. If liquid leaking from a battery pack comes into contact with your eyes, immediately flush thoroughly with water and see a doctor.

To avoid battery leakage:

- Do not expose battery to excessive physical shock, vibration, or liquids.
- Do not disassemble, attempt to repair or deform the battery.
- Do not dispose of battery pack in a fire.
- Do not touch the terminals of the battery, or cause a short between the terminals with a metal object.
- Do not peel or damage the battery label.

### **Important Legal Information**

This Nintendo game is not designed for use with any unauthorized device. Use of any such device will invalidate your Nintendo product warranty. Copying of any Nintendo game is illegal and is strictly prohibited by domestic and international intellectual property laws. "Back-up" or "archival" copies are not authorized and are not necessary to protect your software. Violators will be prosecuted.



*The official seal is your assurance that this product is licensed or manufactured by Nintendo. Always look for this seal when buying video game systems, accessories, games and related products.*



Nintendo does not license the sale or use of products without the Official Nintendo Seal.

**THIS GAME CARD WILL WORK ONLY WITH THE NINTENDO DS™ VIDEO GAME SYSTEM.**



Wireless DS  
Single-Card  
Download Play

THIS GAME ALLOWS WIRELESS MULTIPLAYER GAMES DOWNLOADED FROM ONE GAME CARD.



Wireless DS  
Multi-Card  
Play

THIS GAME ALLOWS WIRELESS MULTIPLAYER GAMES WITH EACH DS SYSTEM CONTAINING A SEPARATE GAME CARD.

The end of the Cosmic Age marks the advent of a new era where interstellar travel is commonplace among spacefaring civilizations. On the fringe of the known universe is a remote planet called Earth.

For as long as can be remembered, a bloodthirsty race of vampires have threatened the existence of humankind on this small planet. And now, alien technology has provided them with new powers.

Equipping themselves with Casket Armor and activating the paraSOL – an environmental control system – to block out the sunlight, they plunged the world into darkness.

It wasn't long before humankind was forced to make one of two choices: to live as slaves under vampire rule or to die fighting the undead horde.

Just as fear and despair pervaded over all, hope appeared in the form of two courageous boys.

One of them, armed with the Dark Sword, engages in a never-ending battle against the vampires. The other is a lad who has yet to harness the power of the sun which lies in his soul.

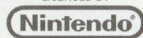
This is their story...

## CONTENTS

The Characters	4	Trance & Burst Attacks	20
The World	6	The Menu Screen	23
The Controls	8	World Features	32
Starting the Game	10	Shooting Screen	36
Quitting the Game	13	Nintendo DS Wireless Communication	38
Action Screen	14	Nintendo DS Wireless Battle	41
Basic Actions	16	Double Slot	44



LICENSED BY



NINTENDO, NINTENDO DS AND THE OFFICIAL SEAL ARE TRADEMARKS OF NINTENDO.  
© 2006 NINTENDO. ALL RIGHTS RESERVED.



# The Characters

## Lucian

Lucian is the vampire-hunting Dark Swordsman who wields Vanargand, the Dark Sword. He allows none but his companion, Nero, to walk by his side. Changing moonlight to raw power, he controls the darkest forces which were never meant to be harnessed by man.

## Aaron

Aaron is a rookie gunslinger working for the Guild, an underground resistance group dedicated to defeating the vampire horde. He tends to act before he thinks, but gradually grows out of this reckless habit through his camaraderie with Toasty, Lucian, and others. Armed with Knight, his trusty Solar Gun and memento of his late father, wages war against the dark forces of the undead.

## Nero (Element: Dark)

Nero is a Terrennial that rules over Dark. This black, winged cat travels with Lucian. Although he has a sharp tongue, Nero treats Lucian like a younger brother, providing extremely reliable and solid support.

## Toasty (Element: Sol)

Toasty is a Terrennial that rules over Light. Having previously fought alongside Aaron's father, Toasty is a seasoned veteran with extensive knowledge and experience. He now serves with Aaron, providing the boy with invaluable insight and guidance.

## Tove (Element: Earth)

## Ezra (Element: Frost)

## Terrennials

Terrennials are the living embodiment of a planet's elemental forces. The elements that they control are used to provide power to Lucian and Aaron.

## Ursula (Element: Flame)

## Alexander (Element: Cloud)

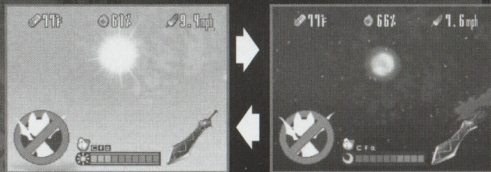




# The World

## ◎ The paraSOL Environmental Manipulation System

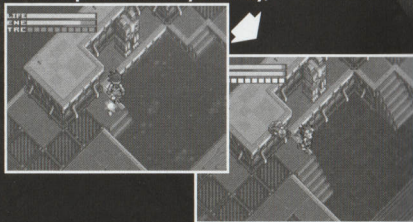
In "Lunar Knights", the paraSOL system controls the planet's weather and climate. As a result, conditions such as day and night as well as fair and harsh weather are governed by both playing time and the progress of the game.



### ◎ Weather and Climate

In the course of the game, various areas such as deserts and tropical rain forests are affected by changes in temperature, wind velocity, weather and other climate conditions. As the game progresses, you will be able to change these conditions and use them to your advantage. (See Page 35, "Change Climate")

**When a pond blocks your way,**

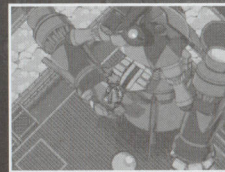
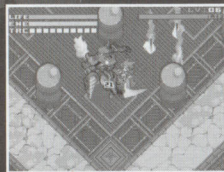


**raise the temperature to dry it up and clear a path.**

## ◎ Save the World

Your main objective is to eliminate the vampires and save the world. To purge the world of the undead, you must expose them to sunlight, thus purifying them. In order to do so, you must first clear your way through a dungeon and defeat the enemy boss. Next, you pack the boss aboard the Casket Rocket and battle your way to the Interstellar Satellite, Sunflower. Once you reach the satellite, the enemy boss will be bathed in solar energy, purifying the creature once and for all. (See Pages 36-37, "Shooting Screen")

1- Battle your way through a dungeon and find the enemy boss.



2- Defeat the boss, seal the creature aboard your Casket Rocket, and lift off.



3- Blast your way past the enemy gauntlet and bring the Casket Rocket and its contents to the Interstellar Satellite Sunflower.

4- Use the Purifex aboard the satellite to purify the vampire.

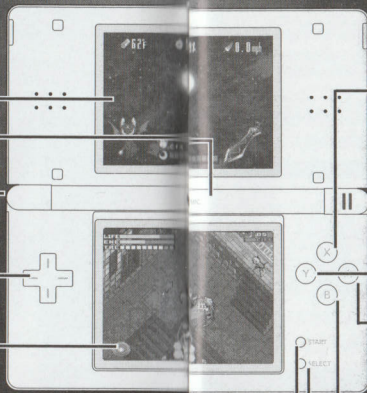


# The Controls

Depending on the situation in play, you will be required to use the button controls and/or the Touch Screen.

“■” designates action-related controls, “★” is for non-action-related controls.

- Top Screen**
- Microphone**
  - Whistle
- L Button**
  - ★ Choose Option
  - Quick Change (Hold down the L Button and press the +Control Pad)
- +Control Pad**
  - ★ Select Options
  - Move
- Touch Screen (Lower Screen)**
  - ★ Select/Confirm Option
  - Commence Trance/Burst Attack
  - Operate the Casket Rocket



- X Button**
  - Look around (Hold down the X Button and press the +Control Pad)
- R Button**
  - ★ Choose Option
  - Lock-on
- Power Button**
- Y Button**
  - Attack
- A Button**
  - ★ Enter
  - Charge
  - Talk/Inspect
  - Send message
- B Button**
  - ★ Cancel/Back
  - Fast forward thru text
  - Defend
- SELECT**
  - Change character
- START**
  - ★ Confirm
  - ★ Open Menu Screen

NOTE: You can exit the game and return to the Title Screen by simultaneously pressing the L/R Buttons, START, and SELECT.

NOTE: During gameplay, closing your Nintendo DS will enter the power-saving Sleep Mode. Opening Nintendo DS will return you to the game in play.





# Starting the Game

Make sure the power is off. Properly insert the “Lunar Knights” Nintendo DS Game Card into the Game Card slot and press the Power Button. When Nintendo DS Boot-up Screen is displayed, touch the Touch Screen to call up Nintendo DS Menu Screen. Touching the “Lunar Knights” panel displayed on the Menu will start the game.

NOTE: This operation is not necessary if your Nintendo DS operation mode is set on Auto Mode. For further information, see your Nintendo DS instruction booklet.

## WARNING - HEALTH AND SAFETY

BEFORE PLAYING, READ THE HEALTH AND SAFETY PRECAUTIONS BOOKLET FOR IMPORTANT INFORMATION ABOUT YOUR HEALTH AND SAFETY.

TO GET AN EXTRA COPY FOR YOUR REGION, GO ONLINE AT [www.nintendo.com/healthsafety/](http://www.nintendo.com/healthsafety/)

Touch the Touch Screen to continue.



## Use a Game Boy® Advance version of “Boktai” to double your fun!

Insert the “Boktai” Game Boy® Advance Game Pak (sold separately) into the Game Boy® Advance Game Pak slot properly. Set up the Game Pak’s Sun Sensor, and commence play. (See Page 44, “Double Slot” & Page 12, “Solar Sensor Settings”)

## Main Menu

Touching the Title Screen displayed on the Touch Screen, or pressing either START or the A Button will call up the Main Menu Screen. Use the +Control Pad to choose one of four options, and press either START or the A Button to make your selection, or simply touch the screen.

NEW GAME  
LOAD  
OPTIONS  
WIRELESS

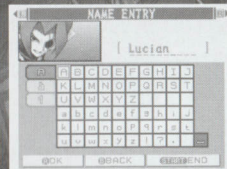
## NEW GAME

Play begins at the start of the story. Select a file for saving your data, and then commence play.

NOTE: Prior to starting the game, entering a password from “Boktai 2” will change characters’ items for the outset of the game.

## Name your character

As the game proceeds, a Character Name Screen will be displayed. Enter your desired name using the controls described below.



## Character Name Screen Controls

Confirm option	Touch Screen
Select option	+Control Pad
Confirm	A Button
Delete a letter	B Button
Switch letters	Y Button/L Button/R Button
Exit	START

## LOAD

Select this to continue playing a previously saved game. To do so, select the saved file of your choice.

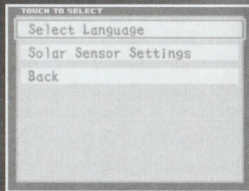
## OPTIONS

Select this for Solar Sensor Settings.

### Solar Sensor Settings

To use Solar Sensor Settings, cover the sensor with your hand to block out the sunlight and press the A Button.

NOTE: The Solar Sensor Settings can only be used if there is a "Boktai" Game Boy® Advance Game Pak plugged into the Game Boy® Advance Game Pak slot.



## LINK

Select this to use Nintendo DS wireless communication for Multiplayer Competition.

### Wireless Battle

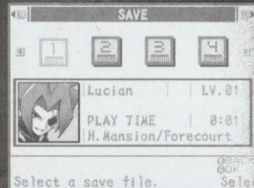
For players who respectively own the game, up to four players can compete in "Nintendo DS Wireless Battle" mode. When only one Nintendo DS Game Card is available, players can compete in "Nintendo DS Download Play" mode.  
(See Pages 38-40, "Wireless Battle")



# Quitting the Game

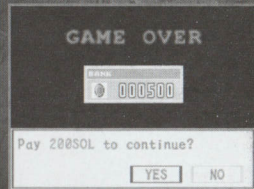
## Ⓢ Saving the Game

When quitting the game, always make sure to save a game in progress. You can save your game by selecting "SAVE" in the Menu Screen. There is a maximum of 4 files available for storing your saved data. Saved data consists of the game's status up to the point where your character entered an area. When you LOAD a saved file, the game will commence at the starting point of the saved area.  
(See Page 31, "SAVE")



## Ⓢ Game Over

The game is over when your character's Life drops to 0 or your character falls from a high location. At this point you can pay out Sols, the currency used in this game, to continue the game at a specified location. If you choose not to continue, it's Game Over and the game will return to the Title Screen. WARNING: Any data that hasn't been saved up to this point will be lost.



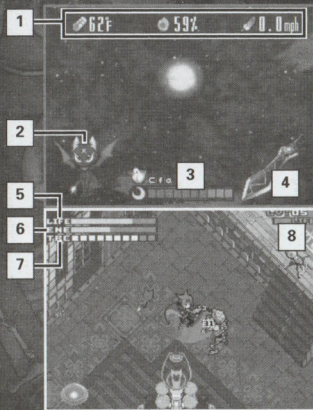




# Action Screen

## The Layout

In the Action Screen, the top screen shows the paraSOL (current weather conditions), while the Touch Screen is used to control the movements of characters such as Lucian and Aaron. Switching characters in accordance with changing conditions such as time and location is an important aspect of this game. Pressing START displays the Menu Screen, allowing you access to such features as saving the game, and selecting items for use. (See Page 19, "Character Change" & Pages 23-31, "The Menu Screen")



- 1 Weather and Climate (See Page 6)**  
From left to right: Temperature/Humidity/Wind Velocity.
- 2 Terrennials (See Page 5)**  
Currently selected Terrennial. or is displayed when a Terrennial is not selected.
- 3 Lunar/Solar Gauge**  
Power meter representing the intensity of solar/lunar light. The more power that's available, the quicker you can charge up your energy.
- 4 Weapon**  
Displays the currently selected weapon.
- 5 Life Gauge (LIFE)**  
Represents a character's current Life. It decreases when an enemy inflicts damage. "Game Over" results when reduced to 0. (See Page 13, "Game Over")

- 6 Energy Gauge (ENE)**  
Energy is consumed by using the Solar Gun or by Element attacks. The energy can be recovered by charging up with solar or lunar light.
- 8 Enemy Data**  
Indicates the Life and Level of the enemy you are attacking. Defeat the enemy by reducing its Life Gauge to 0, and your character will be awarded EXP and Sols.

- 7 Trance Gauge (TRC)**  
This gauge increases when you attack the enemy or you are on the receiving end of an enemy's attack. When the gauge is full, you can trigger either Trance or Burst Attacks. (See Pages 20-22, "Trance & Burst Attacks")

## Game Features

The following are examples of some of the features that are found in this game.



### Sun Crystal

Approaching the crystal releases Terra Bugs which restore a character's Life.



### Hint Panel

Pressing the A Button while in the vicinity of this object displays valuable tips to assist you.



### Solar Station

Holding down the A Button while near the Solar Station allows you to charge up with the energy you stored at the Solar Bank. (See Page 33, "Solar Bank")



### Treasure Chest

To obtain items contained in a Treasure Chest, stand over the chest and open it by pressing the A Button.

## Enemy Status

A mark that appears over the head of an enemy reveals the enemy's current status.



Red or blue signifies when your character's been discovered, while white represents when an enemy, due to some noise, etc., has noticed signs of your presence.



Displayed when an enemy loses track of your character and abandons the search.



This is displayed when an enemy is unconscious as a result of your character's attack or other actions. An enemy in this condition is immobile for a fixed period of time.





# Basic Actions

## ⦿ Movement: +Control Pad

Press the +Control Pad in the direction you wish your character to travel. To run, press twice in the same direction and hold the button down. Since running consumes energy, you should pay close attention to your character's remaining amount. Be careful, though. While running, any damage you take from an attack will be doubled.

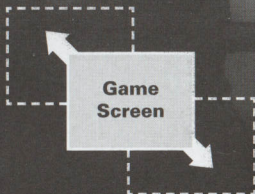


### Run

When running, your character lights up.

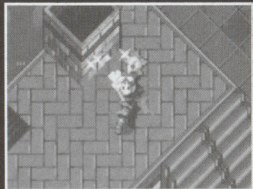
## ⦿ Look Around: Hold down X Button and press +Control Pad

You can view your surroundings by holding down the X Button and pressing the +Control Pad. Use this action to verify your route or to check the location of your enemies.



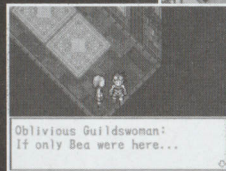
## ⦿ Charge: A Button

You can charge your energy by pressing the A Button while your character is in an area bathed by light such as outside of a dungeon or under a skylight. Lucian requires lunar light, while Aaron needs solar light to charge up energy.



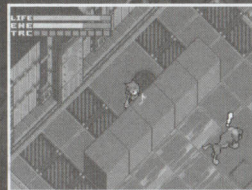
## ⦿ Inspect/Talk: A Button

The A Button triggers several actions such as opening Treasure Chests and revealing the contents of Hint Panels when you are above or below a particular object. In addition, you can talk to a character in the game by standing in front of him or her and pressing the A Button.



## ⦿ Whistle: Blow air into the microphone

Blowing air into the microphone will trigger a sound that can lure an enemy with an acute sense of hearing.



## ⦿ Lock-on: R Button

Holding down the R Button will lock-on to an enemy and face your character in the direction of the target. When there are several enemies in the vicinity, repeated presses of the R Button will cycle through the available targets.





## 🎯 Attack: Y Button

Pressing the Y Button readies your character's weapon. Releasing the button triggers it. When a Terrennial is in use, the attack will be supported by the Terrennial's element. (See Page 30, "Terrennials" & Page 28, "The Dark Sword", "The Solar Gun".)



**Attacking with Lucian**

Mainly wields his Dark Sword to slice and dice his opponents. He can attack without energy, and executes repeated attacks with rapid presses of the Y Button. Aside from his sword, he can also handle weapons such as the Dark Lance and the Dark Scythe.

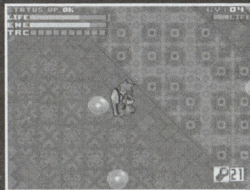


**Attacking with Aaron**

Aaron uses a Solar Gun that fires energy converted from sunlight. As a result, his attacks require energy consumption. On the other hand, his weapon gives him the advantage of long-range attacks against the enemy. There are several Solar Gun models of varying attack capabilities that are available for use.

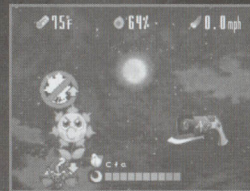
## 🎯 Defend: B Button

Pressing the B Button triggers a shield for blocking frontal attacks. The shield will fade when the Guard Counter displayed on the lower right of the screen reaches 0. Leaving the shield inactive will recover the depleted Guard Counter over a period of time.



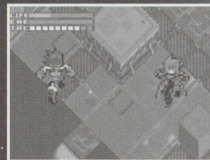
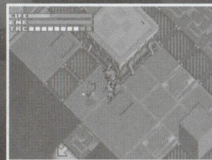
## 🎯 Quick Change: Hold down L Button and press +Control Pad

Holding down the L Button, press Up/Down on the +Control Pad to switch Terrennials, or Right/Left to switch weapons.



## 🎯 Character Change: SELECT

Pressing SELECT switches the character that you control. However you can not change characters when experiencing a Status Abnormality. (See Page 25, "Status Abnormalities")



### 🎯 For smooth diagonal movement...

Go to the Menu Screen, select "Configuration", and then select "CONTROLS" to change the +Control Pad's movement commands. You can set the following directions of movement to respond when "Up" has been pressed on the pad: "+ Up=Up" for moving up the screen; "+ Up=Up-Right" for moving towards the upper right of the screen; or "+ Up=Up-Left" for moving towards the upper left of the screen. (See Page 30, "Configuration")



# Trance & Burst Attacks

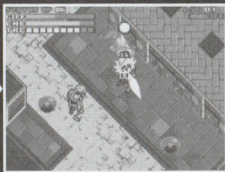
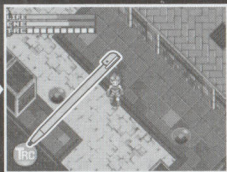
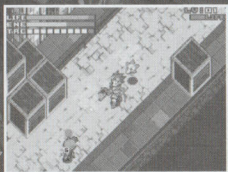
## Trance Attack

This action allows your character to execute powerful attacks by adopting the elements of Terrennials such as Nero or Toasty. (See Page 5, "Terrennials")

NOTE: When a Terrennial is selected, standard attacks become Element attacks.

## Activating Trance

To execute the Trance command, you have to fill your Trance Gauge (TRC) by attacking enemies or incurring enemy attacks. Once the gauge is full, a "TRC OK" icon is displayed on-screen. Simply touch the icon to trigger the Trance. After the Trance starts, the Trance Gauge decreases over a period of time. Once the Trance Gauge is empty, the Trance is canceled, returning your character back to normal. Depending on the Element of the Terrennial used for the Trance, the paraSOL-controlled environmental conditions will be affected.



## Dark Lucian

This is Lucian's form for adopting the Dark powers of Nero. In this state, you can attack with either the B Button or the Y Button. When Lucian returns to his normal form, the time will shift to Night.

### Trance Attacks

<b>Dark Fang</b>	Press the B Button to bite the enemy. With repeated biting, the effectiveness of the attack grows. Dark Fang allows Lucian to absorb the life of his enemies.
<b>Dark Claw</b>	Pressing the Y Button delivers a shredding blow that slices through the air inflicting damage on nearby targets.



## Sol Aaron

This is Aaron's form for adopting Toasty's powers of the Sun. In this state, you can attack enemies using the B Button or Y Button. When Aaron returns to his normal form, the time will shift to Day.

### Trance Attacks

<b>Sol Prominence</b>	Press B Button to deliver a powerful kick. With repeated kicks, the effectiveness of the attack grows. Sol Prominence allows a certain level of energy to be recovered.
<b>Sol Flare</b>	Pressing the Y Button releases an explosive force that damages targets in the immediate vicinity.





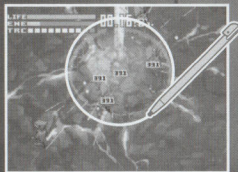
## ◎ Burst Attack

A Burst Attack is a powerful attack triggered by using the Elements of Terrennials other than Toasty and Nero. Its effect is limited to a fixed amount of time. As the game progresses, you will be able to use a variety of Burst Attacks. Burst Attacks are activated in the same manner as the Trance command. (See Page 20, "Activating Trance")



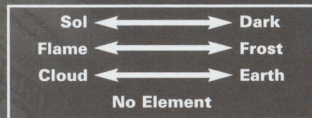
### Ursula (Element: Flame)

Drawing a circle on the Touch Screen will target that area for a fireball attack. The smaller the designated area, the more accurate the attack is, although the actual damage is reduced. On the other hand, laying out a larger target area increases the damage at the cost of reduced accuracy. At the end of this attack, the weather will shift to Sunny.



## ◎ Elements and Damage

Each Terrennial and enemy has their respective Element. Furthermore, an Element has its opposing counterpart that affects the amount of damage applied in an attack. For example, attacking Dark with Sol or vice versa will yield significant damage. Listed below are the related Elements. Note that "No Element" has no opposing force.



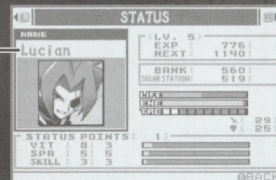
# The Menu Screen

## ◎ Using the Menu Screen

On the Action Screen, pressing START will allow you to use items, check the map, and execute other functions in the game. To switch menus, either touch the desired menu title or press the L/R Buttons. Pressing START or the B Button will return you to the game. (See P.14-15, "Action Screen")

### Top Screen

The menu screen you selected will be displayed here. Switching characters will change the color of the screen.



### Character

Touch to change the character displayed.

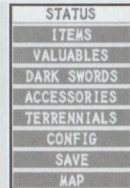


### Time

Displays the current time (Day/Night).

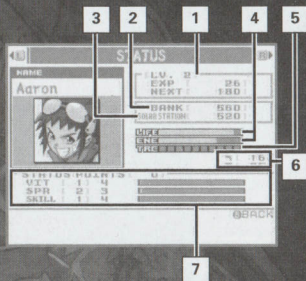


### Menu



## ○ Status

You can verify data including the traits and remaining Life of your character. To change the displayed character, touch the character on the Touch Screen. Note that BANK and SOLAR STATION are shared by both Lucian and Aaron.



**3 Amount of Energy stored at the Solar Station (SOLAR STATION)**

**4 Remaining Life (LIFE) and remaining Energy (ENE)**

**5 Trance Gauge (TRC)**

**6 Currently equipped Weapon (☞☞) / Shield Strength (☐)**

**7 STATUS POINTS**  
Your character develops as you distribute Status Points among 3 traits.

**Vitality:** Represents a character's Life. As the number increases, so does the maximum amount of Life used for the Life Gauge.

**Spirit:** Represents a character's spiritual capacity. As the number increases, so does the maximum amount of Energy used for the Energy Gauge.

**Skill:** Represents a character's skill in battle. As the number increases, the character's attacks improve.

**1 Level**  
From top to bottom a character's Level (LV), current Experience Points (EXP), and required amount of Experience Points for next level-up (NEXT) are listed. Achieving the next level awards the character with Status Points.

**2 Amount of Sol on deposit at the Solar Bank (BANK)**

## ○ Improving Your Character's Traits

Achieving a set amount of Experience Points by defeating enemies allows a character to level-up. When "STATUS UP OK" is displayed above the Life Gauge, use the points to improve your traits. (See Page 14, "Life Gauge")

### Distributing Status Points

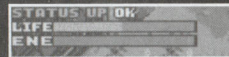
When Status Points are awarded to your character, go to the "Status" Screen. Press Up/Down on the +Control Pad to select the trait you wish to improve, and press Right/Left to distribute the points. When you're finished, press A Button to exit.

## ○ Status Abnormalities

Whenever the status of your character suffers an abnormal effect from an enemy attack, the character's actions are impeded or further damage may be incurred. Use items, or take other measures, to cure yourself of any abnormalities immediately.

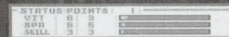
	<b>Burning</b>	Flame damage continuously eats away the character's Life.
	<b>Frozen</b>	Body is chilled to the bone, resulting in slower movement.
	<b>Unconscious</b>	Character is rendered immobile for a fixed amount of time. Additional enemy attacks speed up the recovery from this condition.
	<b>Poisoned</b>	Adversely affects a character's vision during movement. The condition can be cured with either Antitoxin or Wild Potion.
	<b>Confused</b>	The "+" above the character's head starts spinning, and mobility is affected as directional inputs to the +Control Pad are shuffled around. The condition can be cured with Wild Potion.

NOTE: Recovery from Burning, Frozen or Unconscious can be sped up by rapidly tapping on either the +Control Pad or the A/B/X/Y Buttons.



**Number of Points**

**Status/Value**



**Gauge**

**Yellow:** Current value  
**Blue:** New value due to distributed points  
**Orange:** Value due to accessories



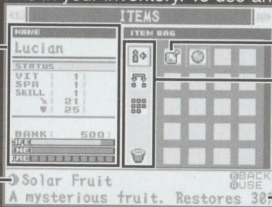
## Items

Use this to use or check items in your inventory. To use an item select "Use (U)".

### Character Information

Lists your character's Status, Sols in Solar Bank, Life, Remaining Sols, and TRC.

### Damage Meter



### Inventory

### Item Menu

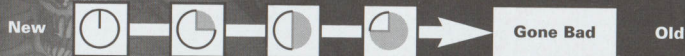
Selections from top to bottom are "Use", "Arrange", "Sort", and "Trash".

### Item Description

## Damage Meter

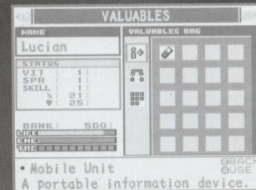
After a period of time, certain items such as Earth Fruit will go bad and lose effectiveness. The Damage Meter provides you with a means to judge the age of an item. Make sure to use an item quickly before it goes bad. Items placed in Storage at the Bank will not go bad. (See Page 33, "Solar Bank")

### Damage Meter



## Valuables

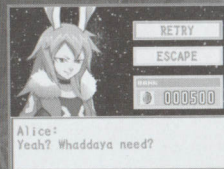
You can use or check valuable items that are vital to your adventure. Selections are similar to those for the Item Screen with the exception that these items cannot be discarded.



## Using the Mobile Unit

One of the valuable items is a Mobile Unit that can be used to move to the World Map, or to restart an area with the conditions reset to the point when your character entered that area.

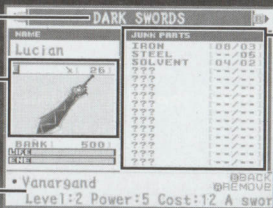
<b>Retry</b>	For a fee paid in Sols, you can restart the current area with the conditions reset to the point when your character entered that area.
<b>Escape</b>	You can escape from a dungeon to the World Map by paying a fee in Sols. (See Pages 32-35, "Using the World Map")



## The Dark Sword

Displayed when Lucian is selected, it allows you to check Lucian's inventory of weapons. Press Right/Left on the +Control Pad to select a weapon and press the A Button to equip it. You can use Quick Change to switch from your currently equipped weapon. To remove an equipped weapon, press the A Button once again during the selection process. (See Page 19, "Quick Change")

### Weapon Description



### Weapon Graphic

The letter "E" appears on an equipped weapon.

### Weapon Skill

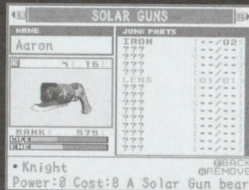
• Vanargand @BACK  
@REMOVE  
Level:2 Power:5 Cost:12 A swor

## Parts Inventory List

The parts required in a recipe for enhancing a weapon are displayed. Parts you do not have enough of appear in red, while collected parts appear in green. The numbers represent the quantity required in the recipe followed by the quantity currently available in your inventory.  
(See Page 35, Enhance Weapons)

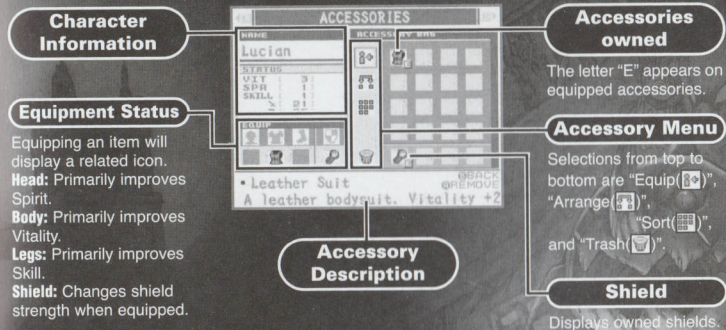
## The Solar Gun

Displayed when Aaron is selected, it allows you to check his inventory of weapons. Screen content and controls are the same as those described for the Dark Sword.



## Accessories

Use this to equip or check accessory items in your inventory. Accessories can be equipped to boost a character's traits and are available for the Head, Body, Legs and Shield categories.



## Equip Accessory

When equipping an accessory, first select "Equip(84)", and then choose the accessory to be equipped. Upon equipping the accessory, numerical values of traits that have increased are displayed in blue, while decreases are shown in red.

To change a character's shield, select "Shield".



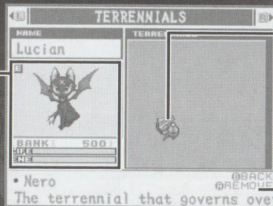


## Terrennials

Use this to review the Elements and traits of a Terrennial. To switch Terrennials, press Right/Left on the +Control Pad, and press the A Button to activate or deactivate Terrennials. (See Page 5, "Terrennials")

### Terrennial Information

A Terrennial activated with Quick Change is displayed with the letter "E".

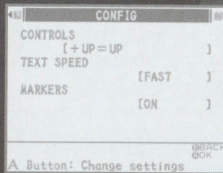


### Terrennial Comrades

### Terrennial Comrades

## Configuration

Use this to change the settings of the game. Press the A Button, and then using the +Control Pad, press Up/Down to select an option and Right/Left to change its settings.

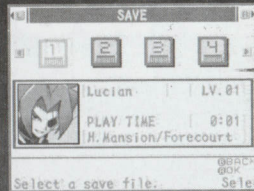


A Button: Change settings

<b>CONTROLS</b>	Changes the +Control Pad setup. (See Page 19, "For smooth diagonal movement...")
<b>TEXT SPEED</b>	Used to adjust the speed in which text is displayed on-screen.
<b>MARKERS</b>	Toggles the display of entry and exit arrow markers (↗) in the Action Screen on or off.

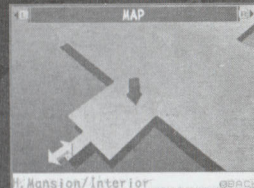
## Save

Use this to save the data of a game in progress to one of the four available files. A file containing previously saved data will be overwritten if selected for use.



## Map

Provides a view of your current location and the overall layout of dungeons. When you enter a new area, that area's map will become accessible.



### Map Controls

<b>+Control Pad</b>	Camera movement
<b>A Button + +Control Pad Right/Left</b>	Switch maps
<b>A Button + +Control Pad Up/Down</b>	Switch floor levels
<b>X Button</b>	Zoom in/out
<b>Y Button</b>	Display current location

### Icon List

	<b>Current location</b>		<b>Dungeon Entrance</b>		<b>Moving Platform</b>
	<b>Sun Crystal</b>		<b>Stairway (Down/Red)</b>		<b>Elevator (Down/Red)</b>
	<b>Solar Station</b>		<b>Stairway (Up/Blue)</b>		<b>Elevator (Up/Blue)</b>



# World Features

## Using the World Map

Providing you with key locations such as cities and dungeons, the World Map is your guide to adventure.

Selecting a city or a dungeon on the map will display pertinent information such as the name of landmarks and the titles of accepted quests. Select a location you want to go to with your stylus, and touch it once again to finalize your selection.

**Name**

**World Map**

The name and other information for the currently selected destination are displayed on-screen.

**Mini-Map**

Selectable locations are displayed. Choose a location on the World Map with the L/R Buttons and press the A Button to enlarge the area of the map surrounding the selected point.

**Time/List**

Shows the current time (Day/Night). A list is displayed on the Touch Screen when a point is designated.

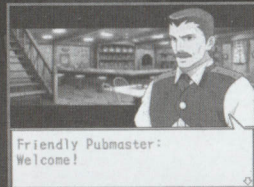
**World Map**

The map shows selectable locations such as cities and dungeons. You can view other areas by sliding your stylus on the screen to move the map.

## Pub

An ideal place to meet and chat with other characters.

<b>Talk</b>	You can engage in conversation with characters in the Pub.
<b>Find Info Broker</b>	Offers two types of information – a record of the monsters that you've eliminated called the "Hunt List", and a log of the quests that you've undertaken called the "Quest List". You can select and review either list at your convenience. Quests do not have anything to do with the main story in this game. However, clearing them can yield rare and valuable items.
<b>Stay at Inn</b>	For some Sols, you can recover your character's Life and Energy. However, the character's Trance Gauge will be reduced to 0.
<b>Listen To Music</b>	Offers a selection of music from the game. You can gain access to new music by obtaining Sound Data.

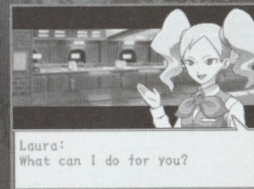


Friendly Pubmaster:  
Welcome!

## Solar Bank

You can deposit items for storage at this location. This is also where you can charge up the energy stored in the Solar Station.


<b>Talk</b>	Engage a character in conversation.
<b>Charge</b>	Let's you convert your hard-earned Sols into energy to charge up the Solar Station. You can also convert the Solar Station's energy reserves back to Sols and return them to your bank account.
<b>Storehouse</b>	Let's you store or retrieve items from your inventory.
<b>Check Storage</b>	Whenever you receive items and your inventory is full, items are delivered here for safekeeping.



Laura:  
What can I do for you?



## Item Shop

You can buy or sell accessories and other items here. To purchase an item, select , and then choose from the merchandise displayed on the left of the screen. When you wish to sell, select an item from your inventory displayed on the right of the screen.

### Price

The price is displayed when an inventory item or merchandise is selected.

### Merchandise



### Inventory

### Description

### Effects

When you select an accessory, the effect that the item will have on your character's traits when it's equipped will be displayed on-screen.

Talk	Engage a character in conversation.
Buy/Sell Items	Buy or sell items.
Buy/Sell Accessories	Buy or sell accessories.
Buy Junk Parts	Buy parts for enhancing weapons.

### ◎ Solve Quests and Obtain New Items

Characters in cities will sometimes commission you to go on a quest for them. Talk to them to learn of and accept a quest, and then set out for the corresponding dungeon. These quests are not related to the main story, but, by completing them, you can gain many special items.



You unlocked a new quest!  
"Find the Medicinal Herbs!"  
(Hunting Mansion: Forecourt)

## Sheridan's Mansion

There are a number of things you can do here including practicing shooting and enhancing your weapons.

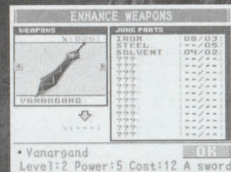
Talk	Engage a character in conversation.
Enhance Weapons	Increase a weapon's level with junk parts.
Change Climate	Switch climate conditions. (NOTE: You can only make use of conditions which you have gained access to in the course of the game.)
Shooting Battle	Shooting practice session. You can select the stage that you wish to practice.



Sheridan:  
Which weapon would you like me to enhance?

### ◎ Collect parts and enhance weapons

Once you've collected all the necessary parts to enhance a weapon, you can improve the weapon by visiting Sheridan's Mansion and selecting "Enhance Weapons". Doing so has a number of benefits that include raising the weapon's level, improving its attack power, and increasing its consecutive attack capability. Gathering parts and then enhancing a weapon here is the only way to raise a weapon's level. (See Page 28, "Parts Inventory List")



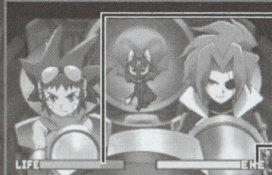


# Shooting Screen

## Objective

Your objective is to transport an enemy boss and purify the creature aboard the Interstellar Satellite Sunflower. On your way to the satellite, you'll have to blast your way through enemies that threaten to thwart your mission. For the Shooting Screen, most actions are controlled from the Touch Screen.

### Currently selected Terrenial



#### Life Gauge (LIFE)

Enemy hits and Meteor collisions will reduce the Life Gauge. When the gauge hits empty, it's Game Over for you.  
(See Page 13, "Game Over")

#### Energy Gauge (ENE)

The Energy Gauge decreases as you attack, and will refill as time passes.

#### Item



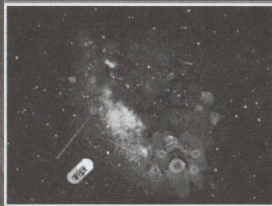
#### Life Capsule

A green capsule with "LIFE" etched on its surface. Take Life Capsules to replenish the Life Gauge.



#### ENE Capsule

A yellow capsule with "ENE" etched on its surface. Take ENE Capsules to replenish the Energy Gauge.

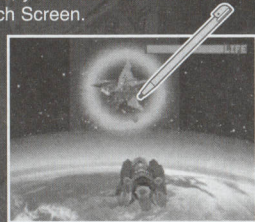


## Purify the Boss

When you defeat a boss enemy in the dungeon, the boss must be sealed aboard a Casket Rocket and transported to space. Once in Space, you head for the Interstellar Satellite Sunflower, controlling your rocket with the Touch Screen.

### Shoot Enemies to Clear the Way

To move the rocket, simply touch and slide it in the direction you wish to go, avoiding enemies along the way. You must reduce some enemies' Life Gauge to 0 to eliminate them.

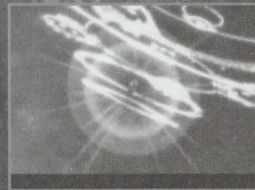


### Switching Terrennials

To switch Terrennials, hold down the L Button, and press the +Control Pad. Switching Terrennials will change the kind of shots fired, providing you with useful ammo for a variety of situations. Switching to Tove enables temporary invincibility when the stylus is applied to the ship.

### The Purifex

Once you defeat a powerful boss, you'll rendezvous with the Interstellar Satellite Sunflower. There, the satellite's Purifex bathes the enemy boss in raw solar energy, and purifies the creature once and for all.







# Nintendo DS Wireless Communication

## Guidelines for Nintendo DS Wireless Play/Nintendo DS Download Play

### ○ Nintendo DS Wireless Play Guideline

Guidelines for playing with a Nintendo DS Game Card for each player.

#### What you will need:

Nintendo DS systems .....One for each player  
 "Lunar Knights" Nintendo DS Game Card .....One for each player

#### Steps

1. Make sure that all Nintendo DS systems are turned off, then insert a "Lunar Knights" Nintendo DS Game Card into the system.
2. Turn all Nintendo DS systems on. Nintendo DS Menu Screen will appear.
3. Touch the "Lunar Knights" panel.
4. Now, follow the instructions on page 42.

### ○ Nintendo DS Download Play Guidelines

Guidelines for single Nintendo DS Game Card play.

#### What You Will Need:

Nintendo DS systems .....One for each player  
 "Lunar Knights" Nintendo DS Game Card ...One

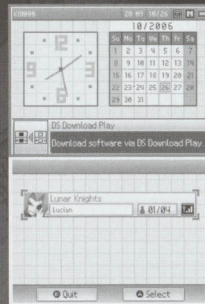
You can enjoy "Lunar Knights" even if you do not have enough Nintendo DS Game Card for all players.

#### Steps for the host

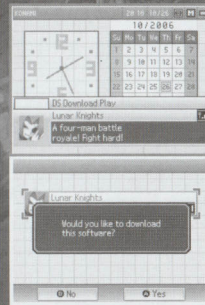
1. Make sure that all Nintendo DS systems are turned off, then insert a "Lunar Knights" Nintendo DS Game Card into the system.
2. Turn all Nintendo DS systems on. Nintendo DS Menu Screen will appear.
3. Touch the "Lunar Knights" panel.
4. Now, follow the instructions on page 41.

#### Steps for guests

1. Turn all Nintendo DS systems on. Nintendo DS Menu Screen will appear.
2. Touch Nintendo DS Download Play panel. The Game Selection Screen will appear.
3. Touch the "Lunar Knights" panel. The Game Confirmation Screen will appear.
4. When the correct software appears, touch "Yes". P1 will start the download process.
5. Please follow the instructions on page 41.



Game Selection Screen



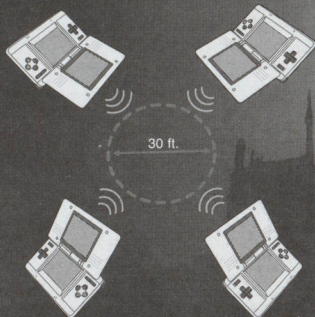
Game Confirmation Screen

### Wireless Communication Guidelines:

During wireless game play, an icon will appear on either the upper or lower displays showing the signal strength of the wireless signal. The icon has four modes depending on the signal strength, as shown below.

No. of Bars	0	1	2	3
Strength	Weaker   Stronger			

- Begin with the distance between systems at about 30 feet or less and move closer or farther apart as desired, keeping the signal strength at two or more bars for best results.
- Keep the maximum distance between systems at 65 feet or less.
- The systems should face each other as directly as possible.
- Avoid having people or other obstructions between Nintendo DS systems.
- Avoid interference from other devices. If communication seems to be affected by other devices (wireless LAN, microwave ovens, cordless devices, computers), move to another location or turn off the interfering device.



# Nintendo DS Wireless Battle

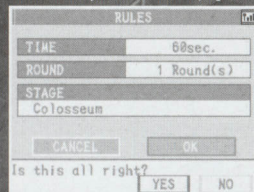
## ○ Nintendo DS Wireless Play

This mode allows up to four players to enjoy Wireless Battle play with a Nintendo DS Game Card for each player. The players battle each other, earning points by defeating their opposition. Whoever earns the most points within a specified time is declared the winner. After a defeat, as long as there's time remaining on the clock, a player can come back to life but precious points are lost.

NOTE: Prior to commencing wireless play, be sure to read "Nintendo DS Wireless Play Guidelines" on page 38.

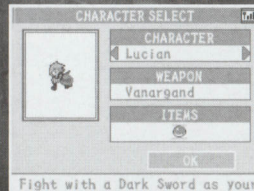
### Rules Selection

The host will then access the Rules Selection Screen and set the time limit, number of rounds, and other game parameters as desired. Peers must wait until the host has completed this setup.



### Character Selection

When the host system has completed the setup, each participant chooses a character and an item to possess at the start of the game. When all participants have entered their selections, the battle will begin. As the game progresses, the number of selectable items increases.

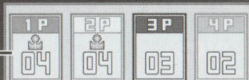




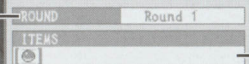
## Begin Competition Play

The controls for Wireless Battle are basically the same as those for the single-player mode. However, certain actions such as Trance are unavailable. Also, you can press SELECT to choose an item, and use it by pressing the L Button. (See Pages 16-19, "Basic Actions")

### Player Number & Score

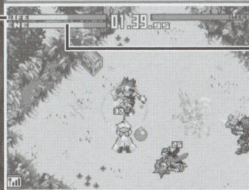


### Current Round Number



### Life Gauge (LIFE)

This gauge represents a character's Life. It decreases when an enemy inflicts damage. A player is defeated when the gauge hits 0.



### Item in Possession

### Energy Gauge (ENE)

You can recharge at any time during a battle.

## Results Screen

At the end of the match, the Results Screen is displayed.

When "Replay?" appears on the screen, the host may select "Yes" to start a new match, or select "No" to exit the mode. Peers should wait until the host has completed this step.



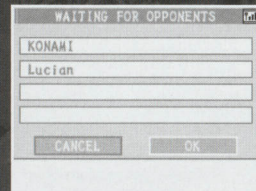
## Nintendo DS Download Play

This mode allows up to four players to enjoy Wireless Battle play with a single Nintendo DS Game Card.

NOTE: Prior to commencing download play, be sure to read "Nintendo DS Download Play Guidelines" on page 39.

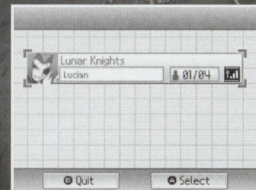
### Host

Nintendo DS system with a Nintendo DS Game Card in its slot is the host system. From the Main Menu Screen, select in the following order: "LINK" → "Wireless Battle" → "Nintendo DS Download Play". From there, commence data download to participating players. (See Page 43, "Begin Competition Play")



### Peer

Nintendo DS system without a Nintendo DS Game Card in its slot is a peer system. Download the game from the host system following the steps described on page 39. After download is completed, wait for the host to accept all participants.





# Double Slot

## Double the fun with Double Slot

When you start the game with a Game Boy® Advance version of “Boktai” inserted in your Nintendo DS system’s Game Boy® Advance Game Pak slot, the Sun Sensor can be used and other features can be added to the gaming experience. (See Page 10, “Starting the Game”)

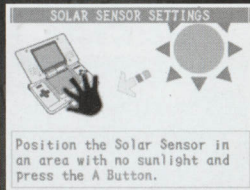
### Double Slot Play With Sun Sensor Feature:

- The Solar/Lunar Gauge increases with the intensity of actual sunlight.
- Solar Station energy is automatically charged in accordance with the level of available sunlight.
- Gauges of characters not in use replenish.
- Additional items become available at Item Shops.

NOTE: Additional items and character gauges which replenish will vary depending on the Game Boy® Advance software in use. (See Page 15, “Energy Gauge” / “Solar Station” & Page 34, “Item Shop”)

## Setting Up the Sun Sensor

Select “Sun Sensor” from the “Valuables” menu. Enter your selection and the Sun Sensor Setup Screen will appear on your display. Expose the sensor to sunlight and press the A Button. This will activate the sensor for a fixed amount of time in which the Solar/Lunar Gauge will increase in accordance with the amount of sunlight captured by the sensor. When the Sun Sensor is active, a sensor icon is displayed above the Solar/Lunar Gauge and the energy charge increase from the sunlight appears on the gauge in green. (See Page 27, “Valuables”)



Solar/Lunar Gauge

## Health and Safety Information

- Avoid long periods of play in the sunlight, as it may be hazardous to your health.
- When playing in the sunlight, be sure to wear a hat, minimize skin exposure to sunlight, use sun-block lotion, avoid dehydration, and take any other necessary protective measures.
- Overexposure to sunlight for a prolonged period of time may hurt your eyes. If you experience any eye discomfort (altered vision, tears, itching, pain, or any other symptoms), discontinue play and consult your doctor immediately.
- When playing indoors, always play in a well-lit room.
- Avoid playing when fatigued or sleep-deprived. Only play when you are alert and awake.

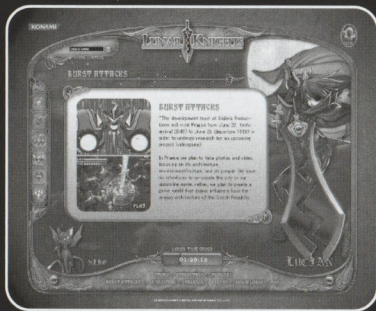


# Special Password System!

When you clear the game, a special password will appear on your screen. Enter this password on the official Lunar Knights homepage to view a record of your adventures.

You will also be eligible to download some cool stuff!

So remember to visit the Lunar Knights official homepage often to get the latest info on the game!



[http://www.konami.jp/lunar\\_knights/](http://www.konami.jp/lunar_knights/)

## CAST

Lucian  
Dominic Allen

Aaron, Laura  
Terry Osada

Nero, Polidori  
Chris Koprrowski

Toasty, Rymer  
Guy Perryman

Edgar, Sheridan  
Greg Dale

Virginia, Carmilla, Lisbeth  
Bianca Allen

Stoker  
Robert Belgrade

Dumas, Kay  
Eric Kelso

Ursula  
Donna Burke

Irza, Bea  
Xanthe Smith

Alexander, Ernest  
Walter Roberts

Tove, Alice  
Rachel Walzer

Perrault  
Kimberly Forsythe

## STAFF

Original Concept  
Hideo Kojima

Scenario  
Ikuya Nakamura  
Ryosaku Ueno

Character Design  
Ikuya Nakamura  
Akira Kanke

Mobile Fighter Design  
Kelichi Matate

## Script Unit

Youta Tsutsumizaki  
Ryosaku Ueno  
Ryo Ozaki  
Hajime Minowa  
Yuichi Kabasawa  
Ryoji Tanaka  
Hiroaki Mizukusa  
Masatoshi Uehara  
Tokifune Otani  
Atsuki Imada

## Program Unit

Yasuhiro Kawabata  
Akira Toyoda  
Hiroki Fujiwara  
Kuniharu Ogura  
Morihiro Kiryu  
Takahiro Sakuma  
Tomoyuki Arai

## Design Unit (2D)

Hitomi Terada  
Kenji Yokoyama  
Toru Kawakami  
Akira Kanke  
Yoshihiro Hobo  
Kenichi Higeta

## Design Unit (3D)

Keiichi Matate  
Aya Hotani  
Yoshiyuki Koido  
Hitoshi Muto  
Kensel Ogihara  
Takashi Ozeki  
Junichi Ikeya

## Motion

Hirofumi Inoue  
Kosuke Kamito

## 3D-Effects

Takayoshi Tanaka  
Yoshiteru Kobayashi

## Sound Unit

Hiroe Noguchi  
Masashi Watanabe  
Masanori Akita  
Akihiro Honda  
Shuichi Kobori  
Nobuko Toda  
Yuichi Tsuchiya  
Yasuhiro Ichihashi  
Tsutomu Watanabe  
Tomoharu Nakano

Rie Yamatani  
Youta Shimoyama  
Rie Nakano  
Hideyuki Suzuki  
Kazuki Muraoka

Animation & CG Movies  
Takayoshi Tanaka

## STUDIO 4°C

Yoshiharu Ashino  
Jiro Kanai  
Naoyuki Asano  
Toshiharu Mizutani  
Hikaru Shibuya  
Hiroki Hirano  
Takafumi Ishida  
Risa Uchiyama  
Kunitoshi Yamada

Publicity Illustrations  
Hector Sevilla  
Simon Bork (seed)

Nobuyoshi Nishimura  
STUDIO 4°C

International Coordination  
Ryan Payton

## Artwork

Shizuko Yoneda  
Yui Ozawa  
Hajime Yashiro  
Mai Kitazawa  
INTAC, LTD.  
Q-BIST Inc.

## Translation

8-4, Ltd  
John Ricciardi  
Kevin Gifford  
David Chen  
Hiroko Minamoto

Eurotek Multilingual Limited

Lead Editor  
David Chen

## Promotion

Konami Digital Entertainment (JPN)  
Akihiko Senju  
Ryan Payton  
Emiko Yokoshima

Konami Digital Entertainment (US)  
Ray Hiyoshi  
Marc Franklin  
Kit Ellis  
Dennis Lee  
Wilson Cheng

## Website

Yasuyo Watanabe  
Takuiro Takahashi  
Takaaki Kitamura

## Debugging

KDE-J  
PSC-MC

Development Cooperation  
Nintendo Co., Ltd.

Tsuyoshi Arayashiki  
Yukako Hamaguchi

Shintaro Naka

Kenichiro Imazumi  
Kazuki Muraoka  
Yoshikazu Matsuhana  
Takeshi Eguchi

Yuji Korekado  
Yutaka Negishi  
Hiroaki Yoshike

Tomomi Yamanaka  
Tomoko Miyamoto  
Megumi Kato

Director  
Ikuya Nakamura

Producer  
Kensuke Yoshitomi

Producer  
Hideo Kojima

©2007 Konami Digital Entertainment Co., Ltd.

## WARRANTY

Konami Digital Entertainment, Inc. warrants to the original purchaser of this Konami software product that the medium on which this computer program is recorded is free from defects in materials and workmanship for a period of ninety (90) days from the date of purchase. This Konami product is sold "as is," without express or implied warranty of any kind, and Konami is not liable for any losses or damages of any kind resulting from use of this program. Konami agrees for a period of ninety (90) days to either repair or replace, at its option, free of charge, any Konami product, postage paid, with proof of date of purchase, at its Factory Service Center. This warranty is not applicable to normal wear and tear. This warranty shall not be applicable and shall be void if the defect in the Konami software product has arisen through abuse, unreasonable use, mistreatment, or neglect.

THIS WARRANTY IS IN LIEU OF ALL OTHER WARRANTIES AND NO OTHER REPRESENTATIONS OR CLAIMS OF ANY NATURE SHALL BE BINDING ON OR OBLIGATE KONAMI. ANY IMPLIED WARRANTIES APPLICABLE TO THIS SOFTWARE PRODUCT, INCLUDING WARRANTIES OF MERCHANTABILITY AND FITNESS FOR A PARTICULAR PURPOSE, ARE LIMITED TO THE NINETY (90) DAY PERIOD DESCRIBED ABOVE. IN NO EVENT WILL KONAMI BE LIABLE FOR ANY SPECIAL INCIDENTAL OR CONSEQUENTIAL DAMAGES RESULTING FROM POSSESSION, USE OR MALFUNCTION OF THIS KONAMI PRODUCT.

Some states do not allow limitations as to how long an implied warranty lasts and/or exclusions or limitations of incidental or consequential damages so the above limitations and/or exclusions of liability may not apply to you. This warranty gives you specific rights, and you may also have other rights which vary from state to state.

If you experience technical problems with your game, please call our Warranty Services number at (650) 654-5687, from 9:00 am to 5:30 pm PST, Mon-Fri.

Konami Digital Entertainment, Inc.  
1400 Bridge Parkway  
Redwood City, CA 94065

## CONSUMER SUPPORT

If you feel stuck in the game, or just need a boost, don't worry!  
You can call the Konami Game Hint & Tip Line for help on many Konami games.

Konami Game Hint & Tip Line: 1-650-801-0465

Hints are available 24 hours a day. Availability is subject to change.

Become a **KONAMI INSIDER**

Register now to become a "Konami Insider" at [www.konami.com](http://www.konami.com) to be automatically entered in a monthly drawing to win FREE games and receive exclusive game play tips and product news!





Konami Digital Entertainment, Inc.  
1400 Bridge Parkway  
Redwood City, CA 94065

©2007 Konami Digital Entertainment  
Co., Ltd.

"Lunar Knights" is a trademark of  
Konami Digital Entertainment Co.,  
Ltd. Developed by Konami Digital  
Entertainment Co., Ltd. Published by  
Konami Digital Entertainment, Inc.  
"KONAMI" is a registered trademark  
KONAMI CORPORATION.

PRINTED IN USA